

Teknikum® 90° HOSE BENDS



APPLICATIONS

Teknikum TITAN™ 90° hose bends are used in tight spaces where basic material handling hoses cannot bend enough. The hose bends are designed for hydraulic transportation of abrasive materials and suitable for many circumstances where the hose must resist wear, movements, vibrations and heat expansions.

Available in a wide range of customized dimensions and for extremely abrasive solutions with CERAMIC inner lining.

Three profile versions available:

Teknikum® 90° HOSE BEND

Short radius bends. Size dependent ratio of bending radius & inner diameter

Teknikum® 90° LR HOSE BEND

LR for Long radius. ~2.5D bend

Teknikum® TITAN™ 90° HOSE BEND

3D bend

ADVANTAGES

- Safe and durable material handling hose bend
- Excellent resistance to abrasion and weather (The outer curve of the hose bend is made +50% of wear resistant inner rubber in **TITAN™** & LR hose bends)
- Eliminates vibrations and noise
- ESD protection with Antistatic version
- Quick and easy installation

TECHNICAL PROPERTIES

Structure

- Tube: black NR 43 ShA
 - smooth and wear resistant
 - antistatic
- Reinforcement:
 - HOSE BEND: textile and steel spiral from Ø i.d 300 mm
 - **TITAN™** HOSE BEND & LR HOSE BEND: textile and steel spiral
- Cover: black SBR 60 ShA
 - wear and weather resistant
 - antistatic
- Burst safety factor 2 x working press.

Temperature range

- -40°C - +80°C.

Electrical properties

- Conductive cover $R \leq 10^6 \Omega$ / length
- Conductive through the hose wall $R \leq 10^9 \Omega$

SUITABLE COUPLINGS AND FLANGES

Availability below and see connecting versions details in:

Teknikum® 90° HOSE BEND

- **Teknikum® Flange** datasheet

Teknikum® 90° LR HOSE BEND

- **Teknikum® Flange** datasheet
- **Teknikum® PLUS™ flange** datasheet

Teknikum® TITAN™ 90° HOSE BEND

- **Teknikum® PLUS™ flange** datasheet
- **Teknikum® TITAN™ Select** datasheet

Optionally we recommend Teknikum PLUS™ flange system for best performance.

3D-model library for connecting hoses

www.teknikum.com/3D

MANUFACTURER

Teknikum Oy (Business ID FI07645274),
Nokiankatu 1, 38210, Sastamala, Finland

More information

sales@teknikum.com

www.teknikum.com

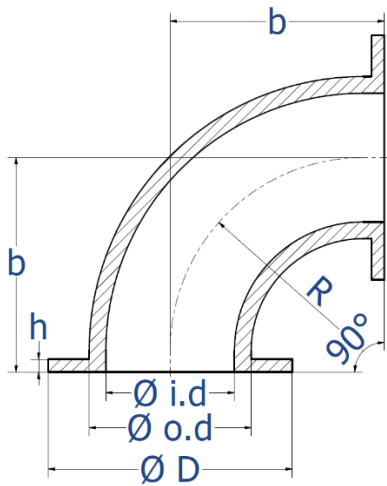


SCIENCE
BASED
TARGETS

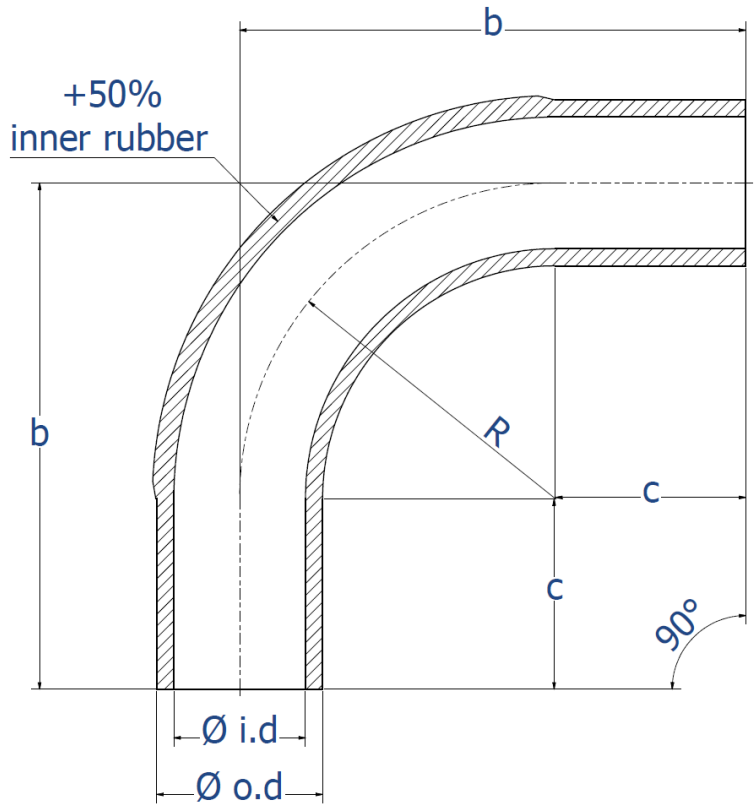
DRIVING AMBITIOUS CORPORATE CLIMATE ACTION

ORDER REFERENCE & DIMENSIONS

Teknikum® 90° HOSE BEND



Teknikum® TITAN™ 90° HOSE BEND & Teknikum® 90° LR HOSE BEND



AVAILABLE CONNECTION TYPE REFERENCE IMAGES

Teknikum® 90° HOSE BEND

Teknikum® Support Flange

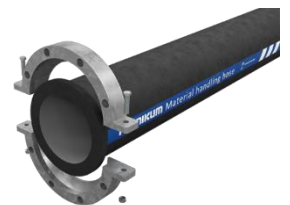


Teknikum® TITAN™ 90° HOSE BEND

Teknikum® TITAN™ Select coupling



Teknikum® PLUS™ flange system

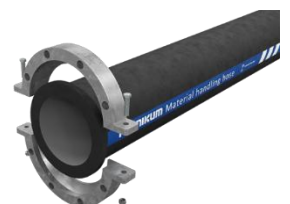


Teknikum® 90° LR HOSE BEND






Teknikum® Support Flange



Teknikum® PLUS™ flange system



Teknikum® TITAN™ 90° HOSE BEND

Product code 	Ø i.d mm 	Ø o.d mm 	c standard (min-max*) mm	R mm	b standard (min-max*) mm	Working press. bar 	Weight kg/pc 
HLER10076T	76	100	105 (55 – 255)	230	335 (285 – 485)	10	3,0
HLER10102T	102	125	150 (50 – 300)	305	455 (355 – 605)	10	6,1
HLER10127T	127	154	190 (50 – 220)	380	570 (430 – 600)	10	8,8
HLER10152T	150	178	215 (50 – 285)	455	670 (505 – 740)	10	11,7
HLER10204T	204	238	275 (50 – 305)	615	890 (665 – 920)	10	25,5
HLER10254T	254	291	215 (50 – 245)	765	980 (815 – 1010)	10	38,0
HLER10305T	305	341	255 (50 – 305)	915	1170 (965 – 1220)	10	55,0
HLER10350T	350	403	295 (50 – 355)	1065	1360 (1105 – 1420)	10	85,0
HLER06405T	405	456	400 (300 – 450)	1215	1615 (1515 – 1665)	6	128,0
HLER06450T	450	508	500 (100-600)	2300	2800 (2400-2900)	6	200,0
HLER06508T	508	558	500	1520	2020	6	224,0
HLER06610T**	610	664	605	1830	2440	6	290,0






*Customization only for with **PLUS™ flange** system

**Ask for more information, also other dimensions available on request

Order reference for different available connection type and Ceramic version

Product code	Item name	Connection
HLER10152T	Teknikum TITAN hose bend 90 SD 152 mm Select	TITAN Select coupling system, no included couplings
HLER10152TF	Teknikum TITAN hose bend 90 SD 152 mm Select	TITAN Select coupling system, couplings included
HLER10152P	Teknikum TITAN hose bend 90 SD 152 mm PLUS	PLUS flange system, no included flanges
HLER10152PF	Teknikum TITAN hose bend 90 SD 152 mm PLUS	PLUS flange system, flanges included
HLEC10152T	Teknikum TITAN CERAMIC hose bend 90 SD 152 mm Select	TITAN Select coupling system, no included couplings
HLEC10152TF	Teknikum TITAN CERAMIC hose bend 90 SD 152 mm Select	TITAN Select coupling system, couplings included
HLEC10152P	Teknikum TITAN CERAMIC hose bend 90 SD 152 mm PLUS	PLUS flange system, no included flanges
HLEC10152PF	Teknikum TITAN CERAMIC hose bend 90 SD 152 mm PLUS	PLUS flange system, flanges included






Teknikum® 90° LR HOSE BEND

Product code 	Ø i.d mm 	Ø o.d mm 	Ø D mm	h mm	R mm	b standard (min-max) mm	c standard (min-max) mm	Working press. bar 	Weight kg/pc 
HLER10050	50	72	165	10	165	260	95	10	2,2
HLER10100	100	130	220	13	350	430 (400 – 470)	120 (50 – 120)	10	6,1
HLER10125	125	157	253	16	300	514 (350 – 550)	214 (50 – 250)	10	8,0
HLER10150	150	189	285	16	360	577 (410 – 600)	217 (50 – 240)	10	10,0
HLER10200	200	237	340	16	480	753 (530 – 785)	273 (50 – 305)	10	25,0
HLER10250	250	288	395	16	610	879 (660 – 900)	269 (50 – 290)	10	36,0
HLER10300	300	338	445	16	725	1007 (775 – 1030)	282 (50 – 305)	10	50,0
HLER06700	700	739	895	16	1586	1786 (1686 – 1886)	200 (100 – 300)	6	260

Order reference for different available connection type and Ceramic version

Product code	Item name	Connection
HLER10150	Teknikum hose bend 90 LR SD 150 mm	hose without support flanges/drillings
HLER10150F	Teknikum hose bend 90 LR SD 150 mm	hose with support flanges/drillings
HLER10150P	Teknikum hose bend 90 LR SD 150 mm PLUS	PLUS flange system, no included flanges
HLER10150PF	Teknikum hose bend 90 LR SD 150 mm PLUS	PLUS flange system, flanges included
HLEC10150P	Teknikum CERAMIC hose bend 90 LR SD 150 mm PLUS	PLUS flange system, no included flanges
HLEC10150PF	Teknikum CERAMIC hose bend 90 LR SD 150 mm PLUS	PLUS flange system, flanges included

Teknikum® 90° HOSE BEND

Product code	Ø i.d mm	Ø o.d mm	Ø D mm	h mm	R mm	b mm	Working press. bar	Weight kg/pc
								
HLGR10025	25	41	115	12	110	150	10	0,70
HLGR10032	32	50	140	12	110	150	10	0,80
HLGR10040	40	56	150	12	110	150	10	0,90
HLGR10050	50	72	165	10	110	150	10	1,00
HLGR10063	63	85	185	10	110	165	10	1,30
HLGR10075	75	97	195	12	135	175	10	1,60
HLGR10100	100	130	220	13	155	200	10	2,80
HLGR10125	125	155	253	16	177,5	225	10	3,80
HLGR10150	150	189	285	15	225	250	10	5,60
HLGR06200	200	236	340	16	245	300	6	9,60
HLGR06250	250	284	395	16	290	350	6	13,0
HLGR06300	300	336	445	16	335	400	6	17,8
HLGR06350	350	390	505	16	380	450	6	18,5
HLGR06400	400	440	565	16	425	500	6	35,0
HLGR06450	450	490	615	16	485	550	6	44,0
HLGR06500	500	540	670	16	515	600	6	53,0

Order reference for different available connection type

Product code	Item name	Connection
HLGR10150	Teknikum hose bend 90 SD 150 mm	hose without support flanges/drillings
HLGR10150F	Teknikum hose bend 90 SD 150 mm	hose with support flanges/drillings