

Teknikum® TITAN™ 45° HOSE BEND



APPLICATIONS

Teknikum TITAN™ 45° hose bends are used in tight spaces where basic material handling hoses cannot bend enough. The hose bends are designed for hydraulic transportation of abrasive materials and suitable for many circumstances where the hose must resist wear, movements, vibrations and heat expansions.

The hose bends come with rubber flanges and steel support flanges. Available also with other connector systems according to the applications and conditions. Please check the suitable couplings and flanges options below.

Available in a wide range of customized dimensions and rubber materials (SBR, NBR or EPDM rubber) and for extremely abrasive solutions with CERAMIC inner lining* (*only with PLUS™ connection).

Teknikum TITAN™ hoses can also be made of EPDM (chemical resistant) or NBR (oil resistant) rubber materials. ANTISTATIC-hose version comes with a black SBR tube providing electrical conductivity and increased safety against ESD.

ADVANTAGES

- Safe and durable material handling hose bend
- Excellent resistance to abrasion and weather (The outer curve of the hose bend is made +50% of wear resistant inner rubber)
- Eliminates vibrations and noise
- ESD protection with Antistatic version
- EPDM and NBR material options
- Quick and easy installation
- Optionally with TITAN™ Select couplings or PLUS™ flanges

TECHNICAL PROPERTIES

Structure

- Tube: grey NR 50 ShA
 - smooth
 - wear resistant
- Tube / Antistatic version: black SBR 60 ShA
 - smooth
 - wear resistant
 - antistatic
- Reinforcement
 - textile and steel spiral from Ø i.d 150 mm
- Cover: black SBR 60 ShA
 - wear and weather resistant
 - antistatic
- Burst safety factor 2 x working press.

Temperature range

- NR / SBR -40°C - +80°C.
- NBR -40°C - +90°C.
- EPDM -40°C - +100°C.

Electrical properties

Teknikum TITAN™:

- Conductive cover $R \leq 10^6 \Omega$ / length
- Conductive through the hose wall $R \leq 10^9 \Omega$ (antistatic version only)

SUITABLE COUPLINGS AND FLANGES

Standard hose is made with Teknikum® Flange connection. Supporting flanges or drilling are not included in product prices.

See connecting versions details in:

- **Teknikum® Flange** datasheet.
- **Teknikum® PLUS™ flange** datasheet.
- **Teknikum® TITAN™ Select** datasheet

Optionally we recommend Teknikum PLUS™ flange system, or with Teknikum® TITAN™ Select couplings and Select gaskets.

3D-model library for connecting hoses

www.teknikum.com/3D

MANUFACTURER

Teknikum Oy (Business ID FI07645274),
Nokiankatu 1, 38210, Sastamala, Finland

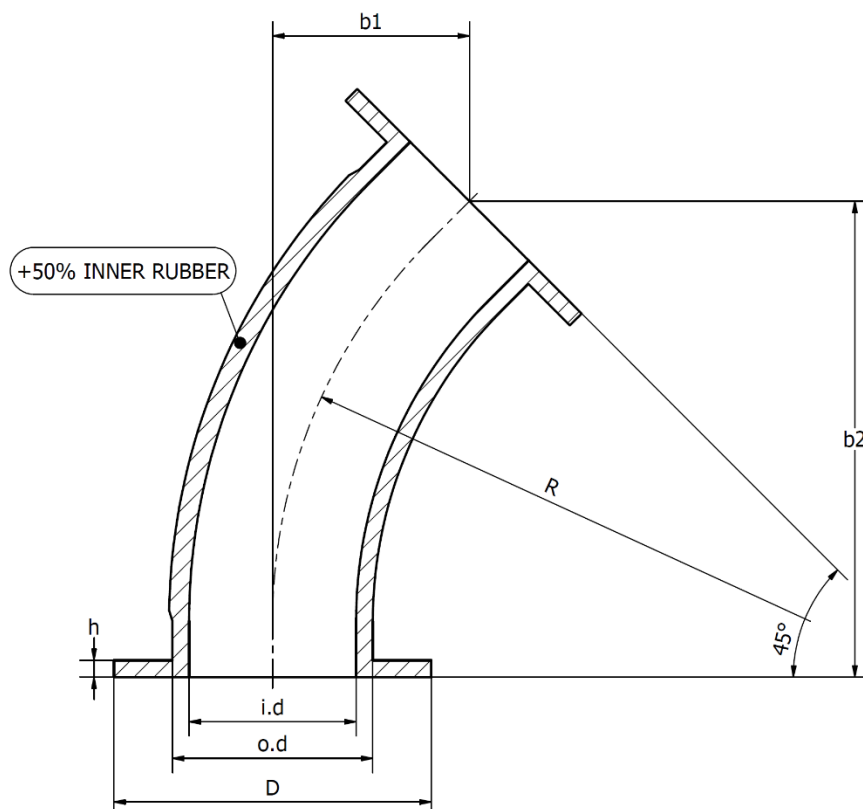
More information






sales@teknikum.com
www.teknikum.com



ORDER REFERENCE & DIMENSIONS

Standard measures on the below table and customized measures apply also to NBR (product code starting HLFS) and EPDM hose bends (product code starting HLFE).

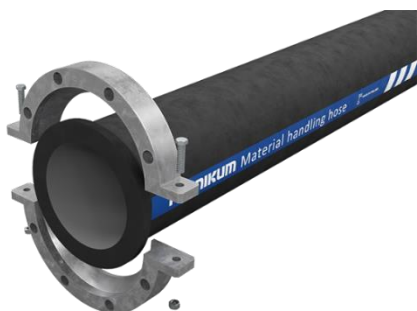


Product code 	Ø i.d mm 	Ø o.d mm 	Ø D mm	h mm	R mm	b1 x b2 mm	Working press. bar 	Weight kg/pc 
HLFR10050	50	72	165	10	290	106 x 256	10	1,2
HLFR10063	63	85	188	10	310	117 x 282	10	1,5
HLFR10075	75	97	198	12	340	124 x 300	10	1,8
HLFR10100	100	130	220	13	374	141 x 341	10	3,2
HLFR10125	125	155	250	16	422	159 x 384	10	4,5
HLFR10150	150	180	285	15	483	177 x 427	10	5,9
HLFR06200	200	236	340	16	591	212 x 512	6	9,9
HLFR06250	250	284	395	16	700	247 x 597	6	13,2
HLFR06300	300	336	445	16	809	286 x 683	6	20,0
HLFR06305	305	336	445	16	915	445 x 1085	6	22,5
HLFR06350	350	390	505	16	724	318 x 768	6	24,0
HLFR06400	400	440	565	16	600	353 x 851	6	32,0
HLFR06500	500	540	670	16	700	283 x 683	6	40,0
HLFR06600	600	640	780	16	800	319 x 771	6	42,0

*Ask for more information, also other dimensions available on request.

REFERENCE IMAGES

With recommended
Teknikum® PLUS™
flange system



With **Teknikum® TITAN™ Select**
flange system



With **Teknikum® Support Flange** coupling

