

Teknikum® TITAN™ rubber T-branch hose



APPLICATIONS

Teknikum® rubber T-branch hoses are used as material handling hoses in abrasive pipeline connections. The rubber hose absorbs vibrations in the pipeline.

The rubber t-branches come with flanges. The connector options are Teknikum flange, Teknikum PLUS flange system and Teknikum TITAN coupling.

The hoses are available in different rubber materials (SBR or EPDM rubber) and for extremely abrasive solutions with ceramic inner lining.

ADVANTAGES

- Safe and durable material handling hose
- High wear-resistance and/or chemical resistance according to need
- Very flexible due to special structure
- Eliminates vibrations and noise
- Excellent weather-resistance
- Quick and easy installation

TECHNICAL PROPERTIES

Structure

- Tube: gray NR, optionally NBR or EPDM rubber
 - NR/ wear resistant (LTR)
 - NBR/ oil resistant (LTS)
 - EPDM/ chemical resistant (LTE)
- Reinforcement:
 - textile and steel spiral from Ød 300 mm
- Cover black SBR
 - Oil resistant
 - Smooth or corrugated

Toleration of tensile strain

Connecting hoses do not tolerate any tensile strain. The piping must be installed and supported in such a way that no tensile strain or pressure can influence on the connecting hose.

Temperature range

According to rubber quality:

- NR -40°C... +70°C
- NBR -40°C... +90°C
- EPDM -40°C... +100°C

SUITABLE COUPLINGS AND FLANGES

Standard hose is made with Teknikum® Flange connection. Supporting flanges or drilling are not included in product prices.

See connecting details in:

- **Teknikum® Flange** datasheet.

3D-model library for connecting hoses

www.teknikum.com/3D

MANUFACTURER

Teknikum Oy (Business ID FI07645274),
Nokiankatu 1, 38210, Sastamala, Finland

More information

sales@teknikum.com
www.teknikum.com

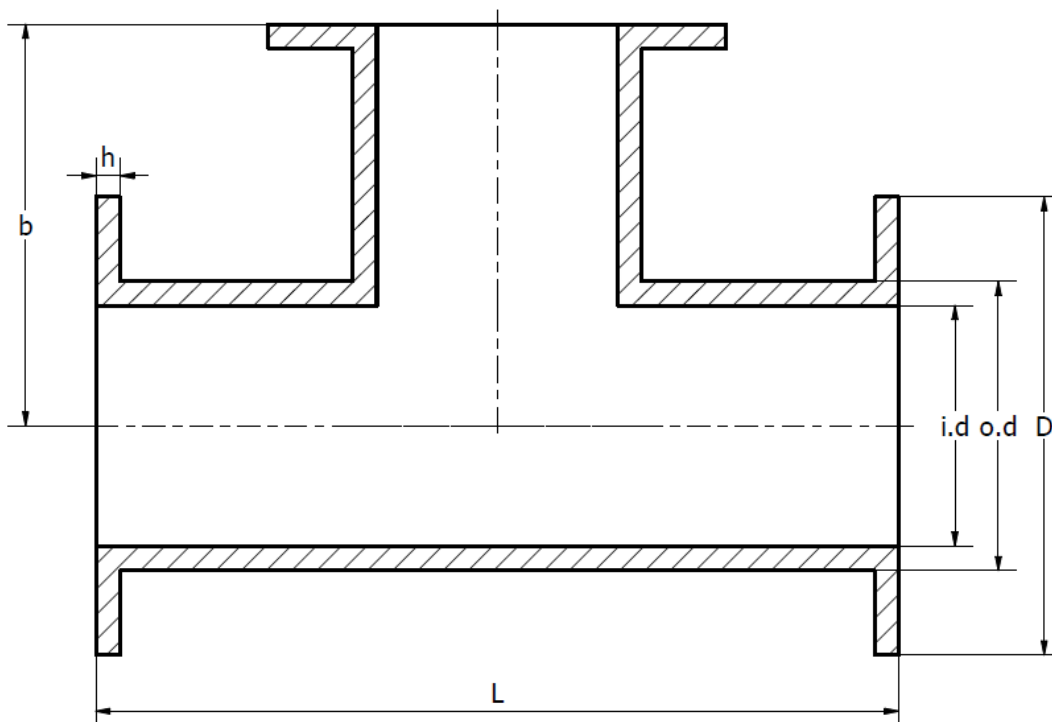







SCIENCE
BASED
TARGETS

DRIVING AMBITIOUS CORPORATE CLIMATE ACTION

ORDER REFERENCE & DIMENSIONS

Standard measures on the below table and customized measures apply also to NBR (product code starting HLTS) and EPDM T-branch (product code starting HLTE).



Product code 	Ø i.d mm 	Ø o.d mm 	Ø D mm	h mm	b mm	L mm	Working press. bar 	Weight kg/pc 
LTR10025	25	47	115	10	150	300	10	0,8
LTR10032	32	50	140	12	150	300	10	1,0
LTR10040	40	62	153	10	150	300	10	1,4
LTR10050	50	72	165	10	150	300	10	1,7
LTR10063	63	85	195	12	175	350	10	2,2
LTR10075	75	96	199	12	175	350	10	2,6
LTR10100	100	130	220	13	200	400	10	4,5
LTR10125	125	155	253	16	225	450	10	6,5
LTR10150	150	180	285	15	250	500	10	7,9
LTR06200	200	236	340	16	300	600	6	13,1
LTR06250	250	284	395	16	350	700	6	18,0
LTR06300	300	336	445	16	400	800	6	24,8
LTR06350	350	390	505	16	450	900	6	38,0
LTR06400	400	440	565	16	500	1000	6	50,0
LTR06500	500	542	672	16	600	1200	6	64,0

REFERENCE IMAGES

With recommended coupling
Teknikum® Support Flange

