

Teknikum® Flange



APPLICATIONS

Teknikum® Flanges are steel support flanges, that are used to support the connection between rubber connecting hose flange and counter flange of the pipeline. Steel support flanges are installed on a completed and finished hose, after making the corresponding rubber flange drillings. Rubber flange drillings as well as the steel support flange installations are made free of charge in the case that customer orders Steel support flanges among connecting hose order.

Standard Steel support flanges comply with connecting dimensions of DIN 2642 / EN 1092-1 / SFS 2170 table PN 10, and the material is zinc galvanized steel. Flanges can be ordered in customized dimensions and specifications (e.g. different material or surface treatment).

ADVANTAGES

- Cost effective connection version
- After installation, flange is a fixed part of a hose
- Customizable (connecting dimensions / material)

Optionally we recommend Teknikum PLUS™ flange system, or with Teknikum® TITAN™ Select couplings and Select gaskets.

3D-model library for connecting hoses

www.teknikum.com/3D

MANUFACTURER

Teknikum Oy (Business ID FI07645274),
Nokiankatu 1, 38210, Sastamala, Finland

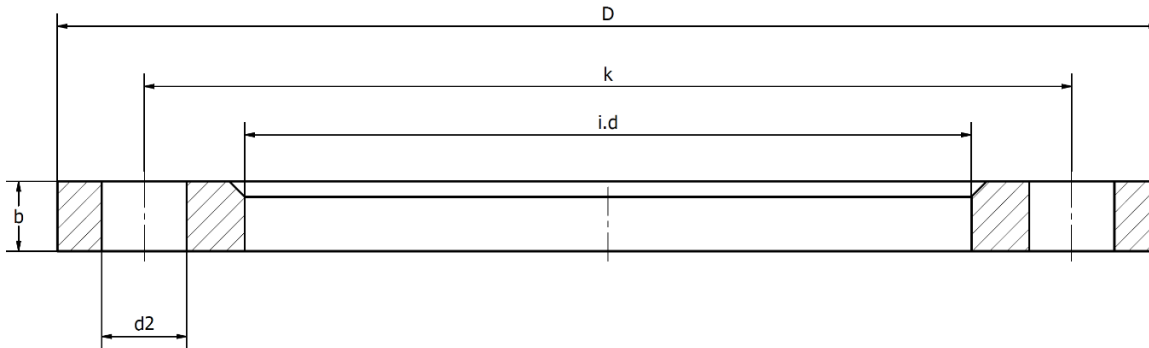
More information





sales@teknikum.com
www.teknikum.com



ORDER REFERENCE & DIMENSIONS

Standard measures on the below table. For customized products, ask from our sales.



Product code 	Pressure class / Nominal diameter	Ø i.d mm 	Ø D mm 	Ø k mm	d2 (pcs/flange) mm	b mm	Weight kg/pc 
LAIPNS020	PN10/16 / DN 20	36	105	75	14 (4)	14	0,8
LAIPNS025	PN10/16 / DN 25	42	115	85	14 (4)	16	1,1
LAIPNS032	PN10/16 / DN 32	52	140	100	18 (4)	16	1,6
LAIPNS040	PN10/16 / DN 40	64	150	110	18 (4)	16	1,8
LAIPNS050	PN10/16 / DN 50	74	165	125	18 (4)	16	2,1
LAIPNS065	PN10/16 / DN 65	92	185	145	18 (4)	16	2,4
LAIPNS080	PN10/16 / DN 80	108	200	160	18 (8)	18	2,9
LAIPNS100	PN10/16 / DN 100	135	220	180	18 (8)	18	3,2
LAIPNS125	PN10/16 / DN 125	158	250	210	18 (8)	18	4,0
LAIPNS150	PN10/16 / DN 150	188	285	240	22 (8)	18	4,7
LAIPNS200	PN10 / DN 200	238	340	295	22 (8)	20	7,0
LAIPNS250	PN10 / DN 250	294	395	350	22 (12)	22	9,0
LAIPNS300	PN10 / DN 300	344	445	400	22 (12)	26	12,0
LAIPNS350	PN10 / DN 350	400	505	460	22 (16)	28	16,0
LAIPNS400	PN10 / DN 400	452	565	515	26 (16)	32	22,1
LAIPNS450	PN10 / DN 450	505	615	565	26 (20)	35	27,0
LAIPNS500	PN10 / DN 500	555	670	620	26 (20)	38	33,0
LAIPNS600	PN10 / DN 600	670	780	725	30 (20)	44	47,0
LAIPNS700	PN10 / DN 700	760	895	840	30 (24)	50	59,0
LAIPNS800	PN10 / DN 800	870	1015	950	33 (24)	56	78,0