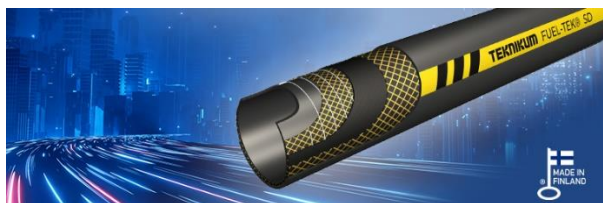


Teknikum FUEL-TEK® SD



APPLICATIONS

Suction and delivery oil hose for transportation of almost all oil-based materials and hydrocarbons with maximum aromatic content of 50%. The hose is suitable for gasoline, diesel oil and oil mixed water. The hose maintains its familiar high-quality flexibility even in very cold conditions.

The hose can be used also with biodiesels which have less than 20% FAME (Fatty acid methyl ester) and with bioethanol containing biofuels.

ADVANTAGES

- Suitable for almost all petroleum-based products
- Excellent weather and ageing resistance
- High mechanical strength
- High burst pressure
- Suitable with many types of couplings
- Flexible even in very cold conditions

STANDARD/ COMPLIANCY

Meets the requirements of chemical hose standard EN 12115:2021 and standard EN 1761:1999.

ATEX compliance (EC 2014/34/EU), equipment group II / category 2.

TECHNICAL PROPERTIES

Structure

- Tube: black NBR
 - smooth
 - oil and fuel resistant
- Reinforcement: textile and steel spiral
- Cover: black CR
 - smooth
 - wear and weather resistant
 - non-flammable
- Burst safety factor: 4 x working press.

Temperature range

- 40°C... +100°C.

Electrical properties

- Meets the requirements of EN 12115:2021
- Hose type: Ω/T
- Conductive tube and cover
 - $R \leq 10^6 \Omega / \text{length}$
- Conductive through the hose wall
 - $R \leq 10^9 \Omega$
- ATEX compliance (EC 2014/34/EU), equipment group II / category 2.

SUITABLE COUPLINGS AND CLAMPS

We recommend hose couplings according to EN 14420-7 and clamps according to EN 14420-3.

MANUFACTURER

Teknikum Oy (Business ID FI07645274),
Nokiankatu 1, 38210, Sastamala, Finland









More information

sales@teknikum.com
www.teknikum.com



ORDER REFERENCE

Selected sizes available directly from stock. Ask more from sales.

Product code 	Ø i.d. mm 	Ø o.d. mm 	Working press. bar 	Vacuum max. bar 	Bending radius mm 	Weight kg/m 	Length m 
H2410BC016	16	27	10	0,9	64	0,6	40
H2410BC019	19	31	10	0,9	76	0,7	40
H2410BC022	22	33	10	0,9	88	0,7	40
H2410BC025	25	37	16	0,9	100	0,9	40
H2410BC030	30	40	10	0,9	120	0,9	40
H2410BC032	32	44	10	0,9	128	1,0	40
H2410BC038	38	51	16	0,9	152	1,3	40
H2410BC040	40	53	10	0,9	160	1,2	40
H2410BC045	45	59	10	0,9	180	1,4	40
H2410BC050	50	62	10	0,9	200	1,6	40
H2410BC050-8	50	66	16	0,9	200	2,0	40
H2410BC057	57	70	10	0,9	228	1,6	40
H2410BC063	63	79	10	0,9	252	1,8	40
H2410BC075	75	91	16	0,9	300	2,0	40
H2410BC076	76	92	10	0,9	304	2,2	40
H2410BC090	90	106	10	0,9	360	3,2	40
H2410BC100	100	116	16	0,9	400	4,1	40
H2410BC102	102	118	10	0,9	408	4,0	40
H2410BC115	115	135	10	0,9	460	4,2	40
H2410BC127	127	147	6	0,9	508	4,6	20
H2410BC152	152	172	6	0,9	608	7,8	20

Other dimensions available on request.

MARKINGS



The marking tape also include standard markings:

TEKNIKUM - EN 12115:2021 – EN1761 – NBR - SD - (id) - ??bar - -40°C/+100°C - Ω/T - quarter/year