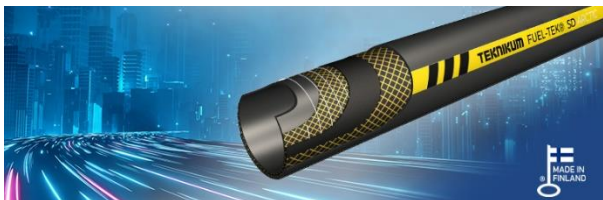


## Teknikum FUEL-TEK® SD Arctic



### APPLICATIONS

Teknikum FUEL-TEK® SD Arctic is a special version of Teknikum FUEL-TEK® SD developed particularly to cold and freezing operating conditions. The hose maintains its familiar high-quality flexibility even in the temperature of -50 °C.

This standard compliant suction and delivery oil hose is suitable for transporting almost all oil-based materials and hydrocarbons with maximum aromatic content of 50%. The hose is also suitable for gasoline, diesel oil and oil mixed water. Furthermore, it can be used with biodiesels having less than 20% FAME (Fatty Acid Methyl Esters) and with bioethanol containing biofuels.

### STANDARD/ COMPLIANCY

Meets the requirements of chemical hose standard EN 12115:2021 and standard EN 1761:1999.

ATEX compliance (EC 2014/34/EU), equipment group II / category 2.

### ADVANTAGES

- Suitable for almost all petroleum-based products
- Designed for extremely cold conditions
- Excellent weather and ageing resistance
- High mechanical strength
- Suitable with many types of couplings

### TECHNICAL PROPERTIES

#### Structure

- Tube: black NBR
  - smooth
  - oil and fuel resistant
- Reinforcement: textile and steel spiral
- Cover: black CR
  - smooth
  - wear and weather resistant
  - non-flammable
- Safety factor: 4

#### Temperature range

- 50°C... +100°C.

#### Electrical properties

- Meets the requirements of EN 12115:2011
- Hose type:  $\Omega$ /T
- Conductive tube and cover  $R \leq 10^6 \Omega$  / length
- Conductive through the hose wall  $R \leq 10^9 \Omega$
- ATEX compliance (EC 2014/34/EU), equipment group II / category 2.

### SUITABLE COUPLINGS AND CLAMPS

We recommend hose couplings according to EN 14420-7 and clamps according to EN 14420-3.

### MANUFACTURER

Teknikum Oy (Business ID FI07645274),  
Nokiankatu 1, 38210, Sastamala, Finland









#### More information

[sales@teknikum.com](mailto:sales@teknikum.com)

[www.teknikum.com](http://www.teknikum.com)



## ORDER REFERENCE

| Product code  | Ø i.d. mm   | Ø o.d. mm   | Working press. bar  | Vacuum max. bar   | Bending radius mm  | Weight kg/m   | Length m  |
|---|---|---|---|---|--|---|---|
|  |  |  |  |  |  |  |  |
| <b>2410LT019</b>  | 19  | 31  | 10  | 0,9   | 76   | 0,7   | 40  |
| <b>2410LT025</b>  | 25  | 37  | 10  | 0,9   | 100  | 0,9   | 40  |
| <b>2410LT038</b>  | 38  | 51  | 10  | 0,9   | 152  | 1,3   | 40  |
| <b>2410LT045</b>  | 45  | 59  | 10  | 0,9   | 180  | 1,4   | 40  |
| <b>2410LT050</b>  | 50  | 66  | 10  | 0,9   | 200  | 2,0   | 40  |
| <b>2410LT075</b>  | 75  | 91  | 16  | 0,9   | 300  | 2,0   | 40  |
| <b>2410LT076</b>  | 76  | 92  | 10  | 0,9   | 304  | 2,2   | 40  |
| <b>2410LT100</b>  | 100   | 116   | 10  | 0,9   | 400  | 4,1   | 40  |

Other dimensions available on request.

## MARKINGS



Also embossed standard markings:

TEKNIKUM - EN 12115:2021 - SD - (id) - 10bar - -45°C/+100°C - Ω/T - quarter/year