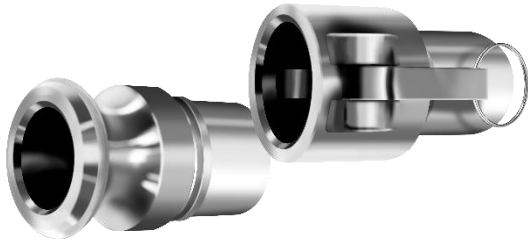


Cam locking coupling



APPLICATIONS

Cam locking couplings according to DIN 2828 / EN 14420-7 are used particularly in chemical industry and mining industries. As default the hose shank is smooth, serrated shank also available. Recommended clamps according to EN 14420-3.

ADVANTAGES

- Safe and durable

TECHNICAL PROPERTIES

Material

- Coupling
 - stainless steel AISI 316L / EN 1.4404
 - other materials available
- Seal
 - default with NBR seal
 - other materials available

SUITABLE COUPLINGS

- Safety clamp

SALES




Teknikum Oy (Business ID FI07645274),
Nokiankatu 1, 38210, Sastamala, Finland

More information

sales@teknikum.com
www.teknikum.com



ORDER REFERENCE

| Product code FEMALE COUPLINGS  | Product code MALE COUPLINGS  | DN | Hose Ø i.d. mm  | Material |
|---|---|-----------|--|-----------------|
| HNFKAR013 | HNMKAR013 | 15 | 13 | SS |
| HNFKAR019 | HNMKAR019 | 20 | 19 | SS |
| HNFKAR025 | HNMKAR025 | 25 | 25 | SS |
| HNFKAR032 | HNMKAR032 | 32 | 32 | SS |
| HNFKAR038 | HNMKAR038 | 40 | 38 | SS |
| HNFKAR050 | HNMKAR050 | 50 | 50 | SS |
| HNFKAR063 | HNMKAR063 | 65 | 63 | SS |
| HNFKAR075 | HNMKAR075 | 80 | 75 | SS |
| HNFKAR100 | HNMKAR100 | 100 | 100 | SS |