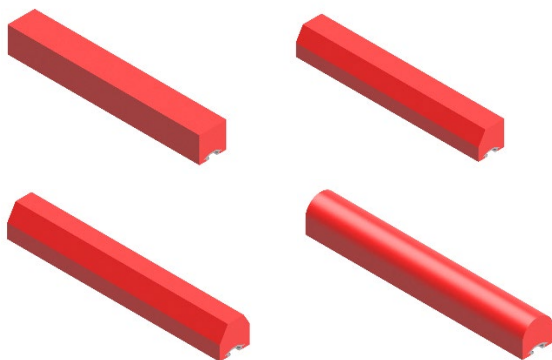


## TEKNIKUM® Polyurethane Lifters



Teknikum® Polyurethane lifters provide longer lifetime for mill linings in specific conditions: wear resistant and elastic polyurethane body creates a combination, which is especially good in circumstances where lifter bars must to perform at abrasive wear of grinded mineral and media.

All lifter bars are moulded and tailor made for the customer mills and processes.

The quality polyurethane and shape of lifter will be chosen for every purpose differently. Polyurethane and shape must be chosen according to grinding and process parameter.

### ADVANTAGES

- Excellent wear resistance
- Low friction material
- Easy installation
- Light weight
- Reduces noise level
- Large sizes and special structures possible with material and the mold technology.

### TECHNICAL PROPERTIES

#### Polyurethane compound

The lifter bars are made of wear resistant Teknikum® Polyurethane compounds selected depending on the application.

#### Fixing profile

Aluminum or steel fixing profile can be selected depending on the process. Fixing can be with clamp block or T-bolt depending of fixing profile.

#### Versions

- **N – rectangular** Different sizes from width 100 – to 250. For mill heads or shell.
- **V – with chamfer** Different sizes from width 100 – to 250. For mill heads or shell.
- **W – with chamfer on both** Different sizes from width 100 – to 250. For mill heads or shell.
- **A – rounded top for wave linings** Different sizes from width 100 – to 250. For mill heads or shell.

Lifter bars are available in different sizes and versions. Other dimensions available on request

### MANUFACTURER

Teknikum Oy (Business ID FI07645274),  
Nokiankatu 1, 38210, Sastamala, Finland

#### Sales

Teknikum Group, Lining BU

#### More information

[sales@teknikum.com](mailto:sales@teknikum.com)

[www.teknikum.com](http://www.teknikum.com)

All rights reserved. © 2023 Teknikum Group Ltd.

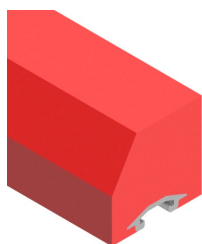


## ORDER REFERENCE

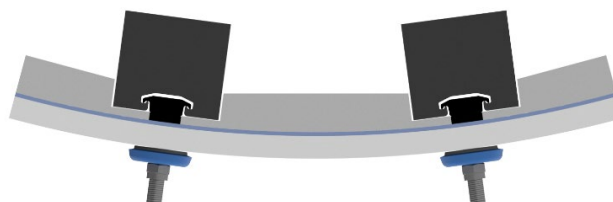
Other dimensions available on request.

Version	Width (mm)	Height (mm)	Max length (mm)	Fixing size
A	100	75 - 150	2000	M16-M20
N, V, W	125,140,150	100 - 150	2000	M16-M20
N, V, W	165	100 - 180	2000	M16-M24
N, V, W	200,210,245	100 - 400	2000	M24-M36

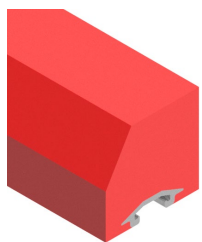
## REFERENCE IMAGES



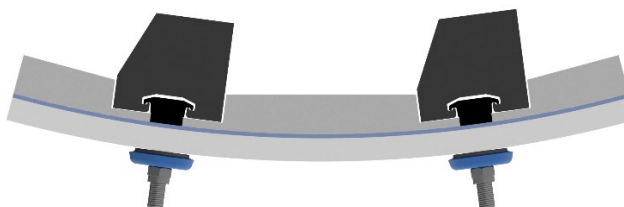
N – rectangular



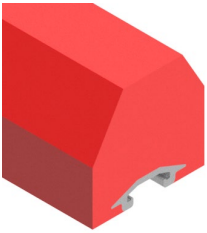
SHELL LINING TYPE - N EXAMPLE



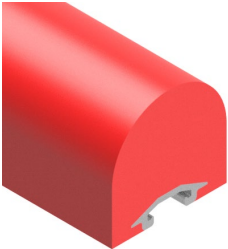
V – with chamfer



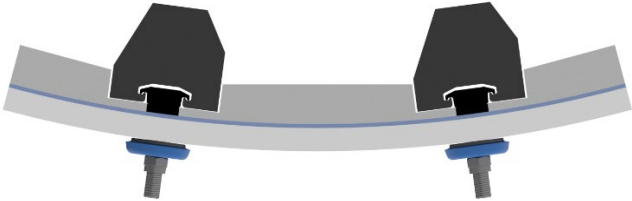
SHELL LINING TYPE - V EXAMPLE



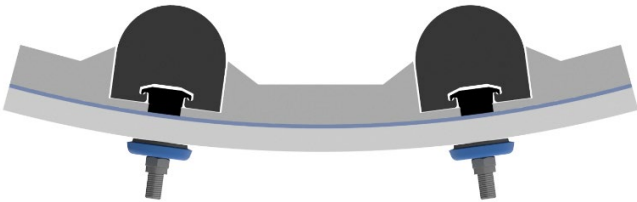
W – with chamfer on both



A – rounded top for wave linings



SHELL LINING TYPE - W EXAMPLE



SHELL LINING TYPE - A EXAMPLE