

TEKNIKUM® Polyurethane Pulp Discharging System



Teknikum® Polyurethane Pulp Discharging System provide longer lifetime for grate discharge mill liners in a specific condition: Wear resistant polyurethane and steel frame body creates combination, which is especially good in cases where pulp lifters must endure high pulp flow and abrasive wear from grinded mineral.

All Teknikum® Polyurethane Pulp Discharging System liner components are designed, and tailor made for the customer mills and processes.

to component good protection against wear and corrosion.

Polyurethane Pulp Discharging System components:

- **Pulp Lifter** steel frame with coated wear polyurethane
- **Center Cone** steel frame with wear polyurethane
- **Center Plate** steel plate with wear polyurethane

The component's polyurethane compound and its thickness will be chosen individually for every application. Polyurethane grade and parts' shape can be chosen according to grinding and process parameters and throughput needs.

ADVANTAGES

- Excellent wear resistance
- Excellent corrosion resistance
- Easy installation
- Liners can be equipped with lifting points for easy installation and handling
- Light weight vs steel liners

TECHNICAL PROPERTIES

Polyurethane materials

The Pulp Discharging System liner components are made from wear resistant Teknikum® polyurethane materials. The thickness of the coating can be selected by application and process parameters and lifetime needs.

Steel frame

The steel frame inside component gives part mechanical stiffness. In mould cast, wear resistant polyurethane gives

- **Polyurethane Support Segment** under pulp lifters assemblies
- **Attachments Systems** for pulp lifters and cone assemblies

Pulp Discharging System for full discharge lining are available for various types and sizes of grate discharge mills. Two chamber mills middle grate walls and pulp lifters are also available.

MANUFACTURER

Teknikum Oy (Business ID FI07645274),
Nokiankatu 1, 38210, Sastamala, Finland

Sales

Teknikum Group, Lining BU

More information

sales@teknikum.com

www.teknikum.com

All rights reserved. © 2023 Teknikum Group Ltd.



DRIVING AMBITIOUS CORPORATE CLIMATE ACTION

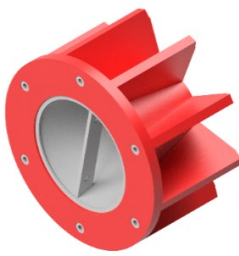
ORDER REFERENCE

| Component scale | | |
|--|-------------------------|---------------------------|
| Mill type | Mill diameter range (m) | Mill head angle range (°) |
| Grate discharge mill | ~1 – 7 m | 0 - 20° |
| Grate discharge mill two chamber mills | ~1 – 3,6 m | 0 - 20° |

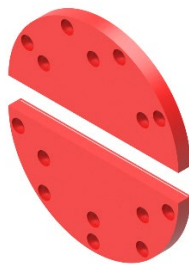
REFERENCE IMAGES



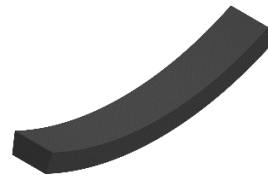
PU Pulp lifter



PU Center cone



PU Center plate



Support segment (Rubber)



Attachment system



Polyurethane Pulp Discharging System assembly