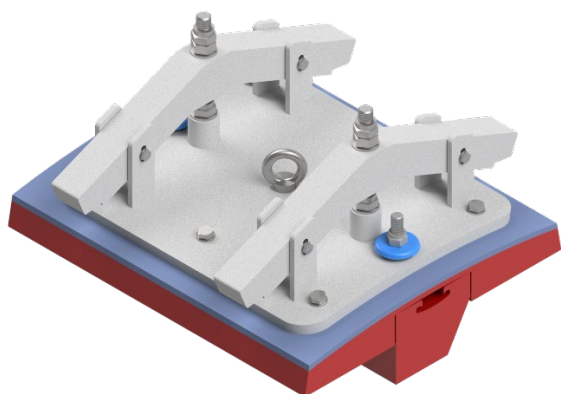


## TEKNIKUM® Polyurethane Mill Man Door Liners



Teknikum® Mill Man Door Liners are designed according to mill and manhole dimensions. Fixing components and gasket creates secure and sealed connection to mill shell and inner wear components.

Outside components frame plate and fixings are made from steel and painted according specifications. Inner wear components, lifter and wear plate with polyurethane and steel body, creates a combination, which is especially good in circumstances where man door lining must stand against abrasion of the grinded minerals and media.

All man door liners are moulded and tailor made for the customer mills and processes.

The polyurethane quality and thickness of wear plate and lifter will be chosen individually for each application. Polyurethane quality and thickness must be chosen according to grinding and process parameter and throughput needs.

### ADVANTAGES

---

- Excellent wear resistance
- Easy installation
- Light weight
- Secure and sealed connection to mill

### TECHNICAL PROPERTIES

---

#### Polyurethane materials

The wear components are made of wear resistant Teknikum® polyurethane materials depending on the application.

#### Steel components

Steel components can be painted according customer specifications.

#### Man Door Liner outside components:

- **Man Door Fixing plate** for fixing the door to mill and wear plate to assembly.
- **Man Door Fixing dogs** for securing for fixing the door to mill
- **Man Door Fixings Systems** for wear plate fixing to fixing plate and for fixing dogs and lifter attachment systems.

#### Man Door Liner inner wear components:

- **Man Door Gasket** for securing leak proof connection between mill and man door liner
- **Man Door Wear Plate** steel backed plate with vulcanized polyurethane on wearing surface
- **Shell Plates Around Man Door** cut to shape shell plates around man door

Teknikum® Man Door liners are available for various sizes of overflow and grate discharge mills. The design of the man door can be with fixing dog type or with fixed outer plate type.

## MANUFACTURER

Teknikum Oy (Business ID FI07645274),  
Nokiankatu 1, 38210, Sastamala, Finland

### Sales

Teknikum Group, Lining BU

### More information

sales@teknikum.com  
[www.teknikum.com](http://www.teknikum.com)

## ORDER REFERENCE

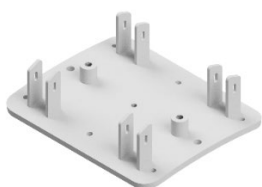
All rights reserved. © 2022 Teknikum Group Ltd.



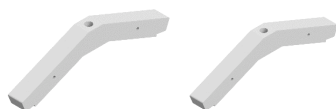
Other dimensions available on request.

Door widths mm	Door lengths mm	Fixing plate thickness mm	Wear plate thickness mm	Gasket thickness mm	For lifters widths mm
400-700	600-1500	20-30	40 - 100	10-15	100, 125, 140, 150, 165, 200, 210

## REFERENCE IMAGES



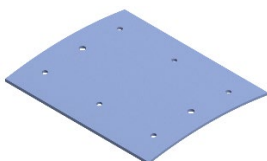
Fixing plate



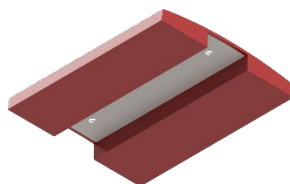
Fixing dogs



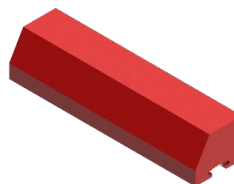
Man door fixings



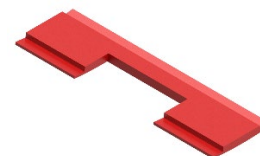
Man door gasket



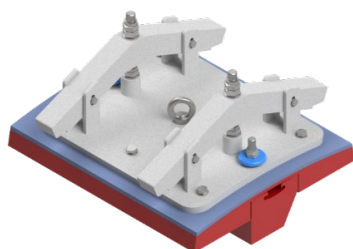
Man door wear plate



Man door lifter



Shell plates for  
man door



Man door Lining assembly