

TEKNIKUM®

Steel Top Shell Plates



Teknikum® Steel Top shell plates are manufactured from wear resistant rubber material with wear resistant steel on wearing surface to give additional wear life.

The shell plates can also be equipped with steel background to give additional strength to the structure if needed.

All Steel top shell plates are moulded and tailor made for the customer mills and processes.

The thickness of the shell plates and wear steel is selected in order to increase life of linings. Also, increasing of mill capacity can be taken account. The width of shell plate is designed for optimum protection from the lifter bars.

The quality and thickness of rubber and wear steel of shell plate will be chosen for every purpose differently from Teknikum mill lining rubbers. Rubber and shape must be chosen according to grinding and process parameter.

Steel Top shell plates are part of Teknikum Steel Top Mill Lining Solution.

ADVANTAGES

- Gives additional wear life
- Excellent wear resistance
- Easy installation
- Light weight

TECHNICAL PROPERTIES

Rubber compound

The shell plates are made of wear resistant Teknikum® TRL rubber compound depending on the application.

Steel backing

3-10 mm steel backing is available for certain versions.

Wear resistant steel top

Wear resistance steel on wearing surface gives excellent protection against abrasive wear and heavy hits. Steel quality and hardness are chosen according to mill and process parameters. Thickness range 10-80mm.

Shell plate versions

The shell plate type can be selected depending on the process, lining type, mill loads and chemical conditions. The plate can be rubber, steel backed, or with fully capsulated steel backing. The wear steel can

Versions

- **VLWS** – rubber with wear resistant Steel Top at wearing surface.
- **VLTWS** – Steel backed plate with wear resistant Steel Top at wearing surface.
- **VLTWS** - fully encapsulated steel backing with with wear resistant Steel top at wearing surface. The capsulated steel backing is well

protected against chemical corrosion.

- **VLAWS** - Shell plate for wave lining with wear resistant steel on top at wearing surface.

Shell plates are available in different sizes from thickness from 40 to 120mm and width up to 330mm. The maximum length is 1600mm.

COMPLIANCY

Suitable for:

- Overflow and grate discharge mills
- Mill shell plates
- Primary / Secondary / Tertiary grinding

MANUFACTURER

Teknikum Oy (Business ID FI07645274),
Nokiankatu 1, 38210, Sastamala, Finland

Sales

Teknikum Group, Lining BU

More information

sales@teknikum.com
www.teknikum.com

© All rights reserved by Teknikum Group
2020

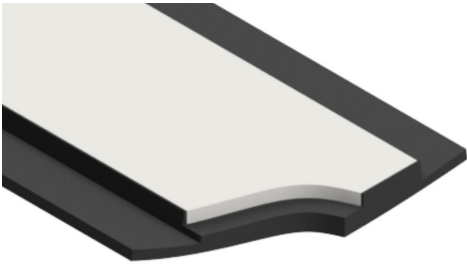


ORDER REFERENCE

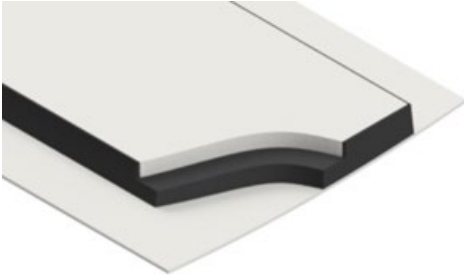
Other dimensions available on request.

Version	Thickness range (mm)	Max width (mm)	Max length (mm)	Backing steel thickness (mm)	Wear steel thickness (mm)
VLWS	40-130	330	1600	N/A	10-80
VLSWS	40-130	330	1600	3-10	10-80
VLWWS	40-130	330	1600	3-10	10-80
VLAWS	40-130	300	1600	N/A	10-80

REFERENCE IMAGES



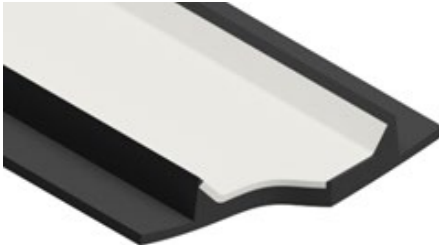
VLWS – steel top and rubber backing



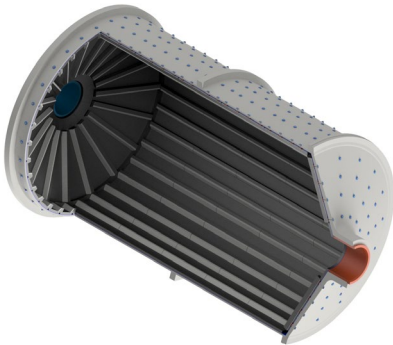
VLSWS – Steel Top and steel backing



VLTWS – Steel Top and fully capsulated steel backing



VLAWS – Steel top for wave lining



Steel Top shell plates for mill shell