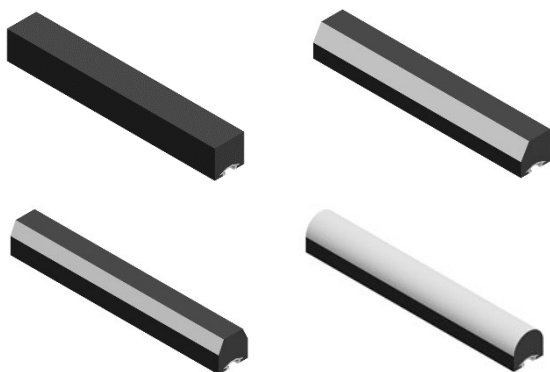


TEKNIKUM® Rubber Lifters



Teknikum® Rubber lifters provide longer lifetime for mill linings in specific conditions: wear resistant rubber and elastic rubber body creates a combination, which is especially good in circumstances where lifter bars must take sharp hits of grinded mineral and media.

All lifter bars are moulded and tailor made for the customer mills and processes.

The quality rubber and shape of lifter will be chosen for every purpose differently. Rubber and shape must be chosen according to grinding and process parameter.

ADVANTAGES

- Excellent wear resistance
- Easy installation
- Light weight
- Reduces noise level

TECHNICAL PROPERTIES

Rubber compound

The lifter bars are made of wear resistant Teknikum® rubber compounds selected depending on the application.

Fixing profile

Aluminum or steel fixing profile can be selected depending on the process. Fixing can be with clamp block or T-bolt depending of fixing profile.

Versions

- **N – rectangular** Different sizes from width 100 – to 250. For mill heads or shell.
- **V – with chamfer** Different sizes from width 100 – to 250. For mill heads or shell.
- **W – with chamfer on both** Different sizes from width 100 – to 250. For mill heads or shell.
- **A – rounded top for wave linings** Different sizes from width 100 – to 250. For mill heads or shell. Size V210x275.

MANUFACTURER

Teknikum Oy (Business ID FI07645274),
Nokiankatu 1, 38210, Sastamala, Finland

Sales

Teknikum Group, Lining BU

More information

sales@teknikum.com

www.teknikum.com

All rights reserved. © 2020 Teknikum Group Ltd.

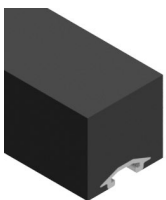


ORDER REFERENCE

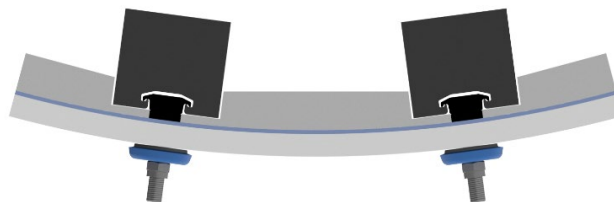
Other dimensions available on request.

Version	Width (mm)	Height (mm)	Max length (mm)	Fixing size
A	100	75 - 150	1500	M16-M20
N, V, W	125	100 - 150	1500	M16-M20
N, V, W	140	100 - 150	1500	M16-M24
N, V, W	150	100 - 150	1500	M16-M24
N, V, W	165	100 - 180	1500	M16-M24
N, V, W	200	100 - 400	1500	M24-M36
N, V, W	210	100 - 400	1500	M24-M36
N, V, W	245	100 - 400	1500	M24-M36

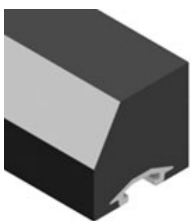
REFERENCE IMAGES



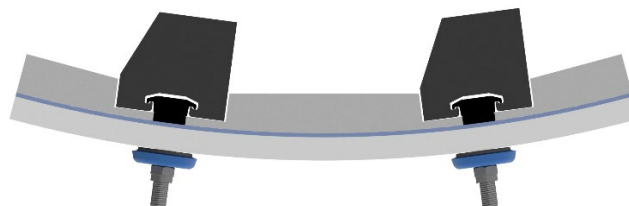
N – rectangular



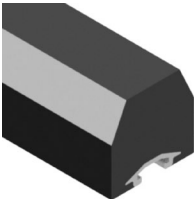
SHELL LINING TYPE - N EXAMPLE



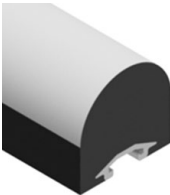
V – with chamfer



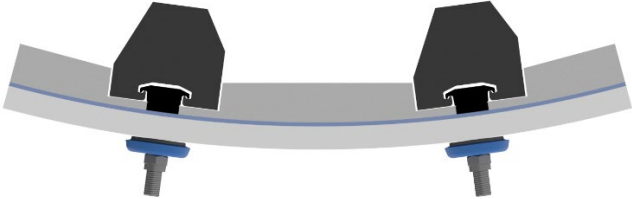
SHELL LINING TYPE - V EXAMPLE



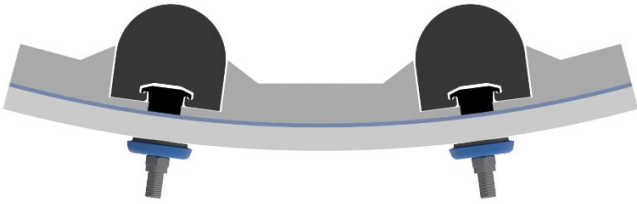
W – with chamfer on both



A – rounded top for wave linings



SHELL LINING TYPE - W EXAMPLE



SHELL LINING TYPE - A EXAMPLE