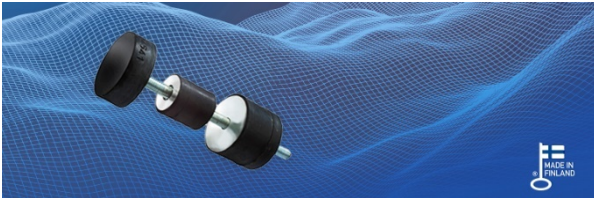


TEKNIKUM®

Cylinder isolators



Teknikum® Cylinder isolators are flexible fasteners that insulate against the vibration and structure-borne noise. They are intended for applications where it is possible to perform a fixed installation. Cylinder isolator is installed so that the compression stress is directed against the rubber pad.

Different available types of cylinder isolators differ in their method of fastening and are available, both with internal and external threading.

The rubber quality is a black natural rubber with a hardness of 50+5 ShA.

If required, we will provide additional information on dimensioning.

ADVANTAGES

- Durable and wear resistant
- Effective for severing acoustic bridge
- Effective for damping vibration

TECHNICAL PROPERTIES

Structure

- Rubber:
 - natural rubber (NR)
 - hardness of 50+5 ShA
 - black
- Galvanized steel caps
- Fixing screw bolts

Temperature range

- 40°C... +70°C (NR)

ENVIRONMENTAL RESISTANCE

- Weather-resistant
- Load bearing

MANUFACTURER

Teknikum Oy (Business ID FI07645274),
Nokiankatu 1, 38210, Sastamala, Finland

More information

sales@teknikum.com
www.teknikum.com

All rights reserved. © 2020 Teknikum Group Ltd.



ORDER REFERENCE

Product type	Product code - number	H (mm)	Ø D (mm)	Ø d (mm)	Delivery batch quantity
A	12540011 - MTR 2215/11	22	20	M6	100
A	12543011 - MTR 4015/11	40	50	M10	50
A	12544011 - MTR 5015/11	50	80	M10	50
B	12540010 - MTR 2215/10	22	20	M6	50
C	12542000 - MTR 3515/00	35	40	M10	50
C	12544000 - MTR 5015/00	50	80	M10	25
C	13484000 - MTR 6015/00	60	100	M16	25
C	13485000 - MTR 7515/00	75	150	M20	10

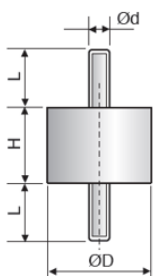
AVAILABILITY (table text color)

Blue = in stock

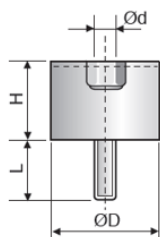
Grey = project orders on demand

REFERENCE IMAGES

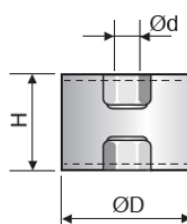
Type A



Type B



Type C



LOAD DIAGRAMS

When the equipment to be damped is quite narrow and a low characteristic frequency is required from the load/damper assembly, the dampers may be mounted obliquely so that the combined compression stress and shear stress are directed onto them. They can also be mounted horizontally, so that only shear stress is directed onto them.

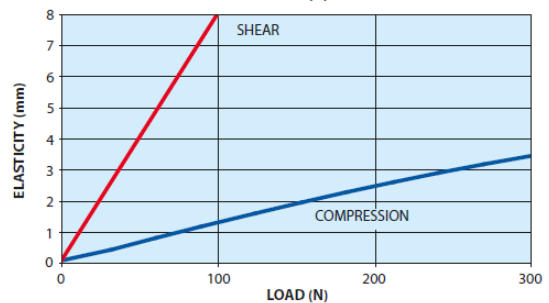
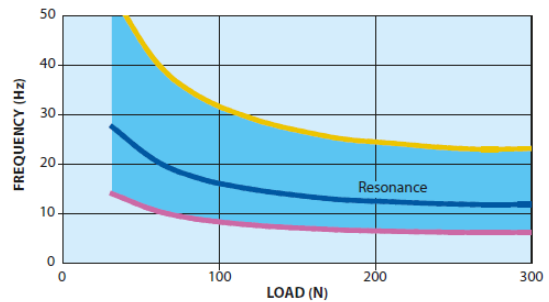
The diagrams show the elasticity for loads exerting pure compression or shear.

Cylindrical isolators must not be subjected to tensile stress.

Calibration curves demonstrate the characteristic frequencies obtainable under various loads:

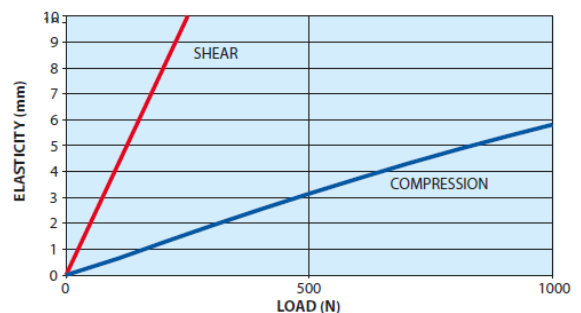
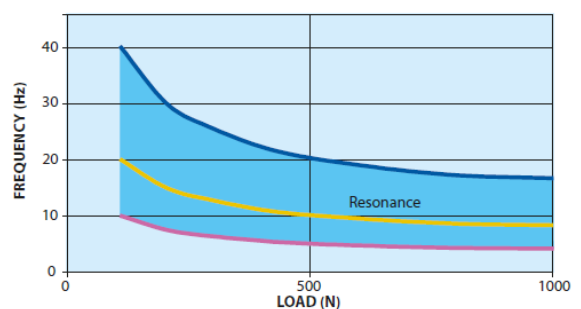
MTR 2215

Height 22 mm
Load
compression 300 N
shear 100 N
Lowest supercritical
damping frequency 22 Hz



MTR 3515

Height 35 mm
Load
compression 1000 N
shear 300 N
Lowest supercritical
damping frequency 17 Hz



MTR 4015

Height 40 mm

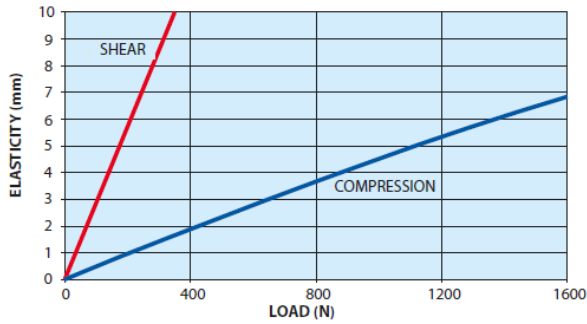
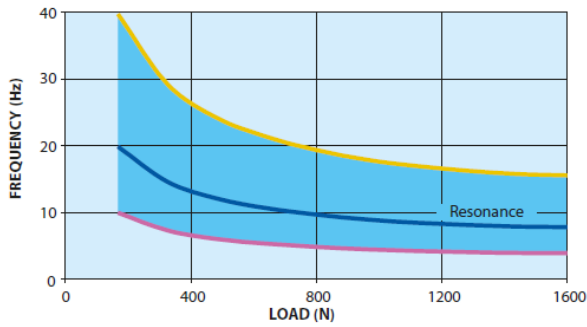
Load

compression 1600 N

shear 500 N

Lowest supercritical

damping frequency 16 Hz



MTR 5015

Height 50 mm

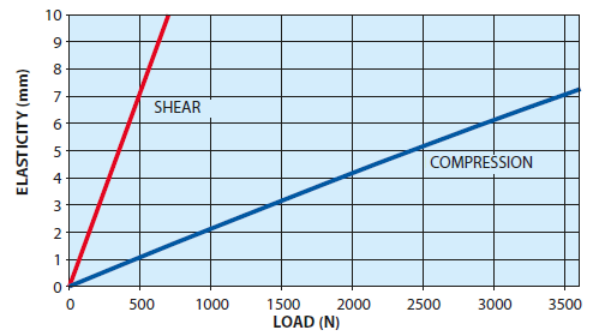
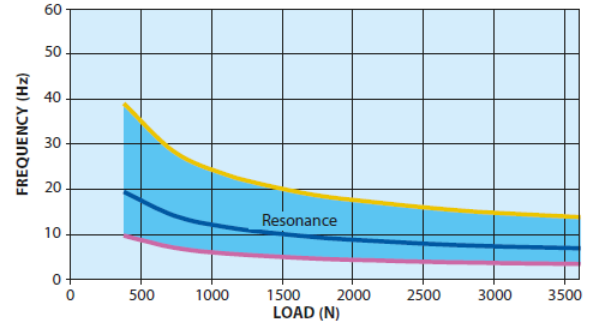
Load

compression 3600 N

shear 1000 N

Lowest supercritical

damping frequency 15 Hz



MTR 6015

Height 60 mm

Load

compression 5500 N

shear 2000 N

Lowest supercritical

damping frequency 14 Hz

