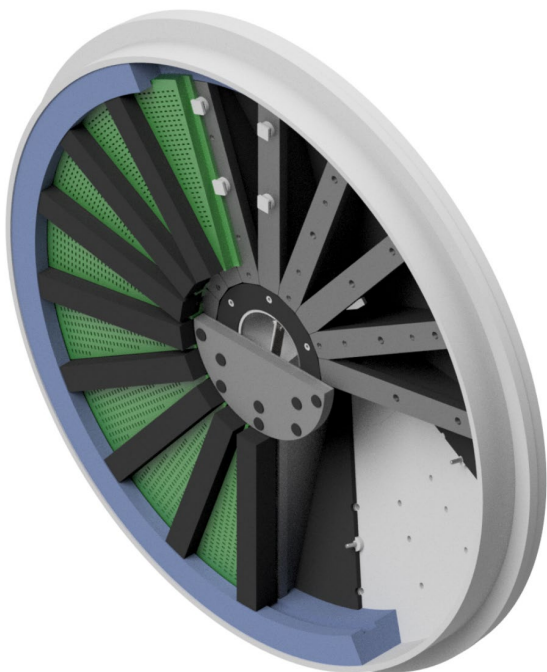


TEKNIKUM® Rubber Pulp Discharging System



Teknikum® Rubber Pulp Discharging System provide longer lifetime for grate discharge mill liners in a specific condition: wear resistant rubber and steel frame body creates combination, which is especially good in circumstances where pulp lifters must endure high pulp flow and abrasive wear from grinded mineral.

All Teknikum® Pulp Discharging System liner components are moulded or rubber coated and tailor made for the customer mills and processes.

The quality and thickness of rubber on components will be chosen for every purpose differently. Rubber and shape must be chosen according to grinding and process parameter and throughput needs.

ADVANTAGES

- Excellent wear resistance
- Excellent corrosion resistance
- Easy installation
- Liners can be equipped with lifting points for easy installation and handling
- Light weight vs steel liners

TECHNICAL PROPERTIES

Rubber compound

The Pulp Discharging System liner components are made from wear resistant Teknikum® rubber compounds. The thickness of wear rubber can be selected by application and process values and lifetime needs.

Steel frame

The steel frame inside component gives part mechanical strength. Moulded or coated wear resistant rubber gives to component good protection against wear and corrosion.

Rubber Pulp Discharging System components:

- **Pulp Lifter** steel frame with coated wear rubber
- **Center Cone** steel frame with wear rubber
- **Center Plate** steel plate with wear rubber
- **Rubber Support Segment** under pulp lifters assemblies
- **Attachments Systems** for pulp lifters and cone assemblies

Pulp Discharging System for full discharge lining are available for various types and sizes of grate discharge mills. Two chamber mills middle grate walls and pulp lifters are also available.

MANUFACTURER

Teknikum Oy (Business ID FI07645274),
Nokiankatu 1, 38210, Sastamala, Finland

All rights reserved. © 2020 Teknikum Group Ltd.

Sales

Teknikum Group, Lining BU

More information

sales@teknikum.com

www.teknikum.com



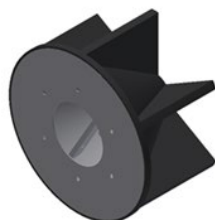
ORDER REFERENCE

Component scale		
Mill type	Mill diameter range (m)	Mill head angle range (°)
Grate discharge mill	~1 – 7 m	0 - 20°
Grate discharge mill two chamber mills	~1 – 3,6 m	0°

REFERENCE IMAGES



Pulp lifter



Center cone



Center plate



Support segment



Rubber Pulp Discharging System assembly