

## TEKNIKUM®

### Rubber Mill Linings



Teknikum® Rubber Mill Linings are manufactured from wear resistant rubber material. Rubber materials are specially developed for mining and grinding mill applications.

The Rubber Mill linings made from Teknikum TRL11 and TRL18 compounds are best suited for primary and secondary stage AG/SAG and ball mills stage grinding processes.

Rubber liners made from Teknikum TRL17, TRL20 are best suited for secondary and tertiary stage grinding processes. TRL21 compound is specially designed for dry grinding applications,

All Rubber mill linings are moulded and tailor made for the customer mills and processes.

The compound and thickness of rubber liner will be chosen for every purpose differently from Teknikum mill lining rubbers and components. Rubber and shape mill lining must be chosen according to grinding and process parameter.

The mill lining can be all rubber of liners or combination of steel top and rubber liners to give a best performance value.

#### ADVANTAGES

---

- Thickness of rubber can be modified according to specific mill and process values
- Excellent wear resistance
- Easy installation with dedicated fixing system
- Light weight vs. full steel liner
- Liner can be equipped with lifting points for easy installation and handling

#### TECHNICAL PROPERTIES

---

##### Rubber compound

The liners are made of wear resistant Teknikum® TRL rubber compounds depending on the application.

##### Attachment system for rubber mill liners

Teknikum® Mill Liner Attachment is system, based on fixing profile (aluminum or steel) on lifter bar and clamp blocks or T-bolt type fixing system. Range from M16 to M36.

##### Liner type selection

The liners type can be selected depending on the process, lining type, mill loads and chemical conditions. The liner dimensions: lifters, shell plates or head plates can be chosen depending of mill and conditions and component wear life needs.

With Teknikum mill liner components and attachments system, all components for complete mill lining are available for various types and sizes of overflow and grate discharge mills.

## Rubber Liner components for grinding mills:

- **Rubber Lifters** for mill heads and shell
- **Rubber Shell Plates** for mill shell
- **Rubber Head Plates** for mill heads
- **Filling segments** for mill heads
- **Center rings** - for mill heads
- **Rubber Grate Plates** for mill discharge heads
- **Discharge Pulp Lifter Systems** for mill discharge head.
- **Mill man door liner** for mill shell man door
- **Attachments system** for mill heads and shell clamp block or T- bolt based system.

- Grinding medias: balls, pebble, cylpebs
- Ore materials: gold, copper, phosphate...
- Minerals: lime, talc...

## MANUFACTURER

Teknikum Oy (Business ID FI07645274),  
Nokiankatu 1, 38210, Sastamala, Finland

## Sales

Teknikum Group, Lining BU

## More information

[sales@teknikum.com](mailto:sales@teknikum.com)

[www.teknikum.com](http://www.teknikum.com)

All rights reserved. © 2020 Teknikum Group Ltd.

## COMPLIANCY

Suitable for:

- Overflow-, grate discharge mills
- Ball-, AG-, SAG-, Rod-, Pebble mills
- Primary/ Secondary /Tertiary grinding



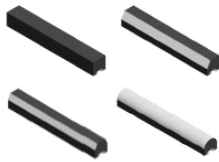
## PROPERTY & RECOMMENDATION CHART FOR RUBBER

Version	Hardness	Abrasive wear resistance (1-5)	Tear & impact wear resistance (1-5)	Grinding stage (primary,secondary tertiary)	Maxium operation temperature (°C)
<b>TRL11</b>	60 ± 5	4	4,5	primary / secondary	+70°C
<b>TRL17</b>	60 ± 5	4	4	secondary	+70°C
<b>TRL18</b>	60 ± 5	4	5	primary	+70°C
<b>TRL20</b>	65 ± 5	5	3	secondary / tertiary	+80°C
<b>TRL21</b>	60 ± 5	4	3	secondary / tertiary (dry grinding)	+100 °C (120 °C short terms)

## REFERENCE IMAGES

### Feed- and discharge head liners for overflow and grate discharge mills:

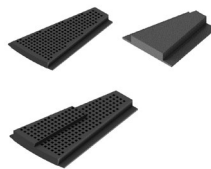
TEKNIKUM®  
Rubber Lifters



TEKNIKUM®  
Rubber Head Plates



TEKNIKUM®  
Rubber Grate Plates



TEKNIKUM®  
Mill liner Attachment  
Systems

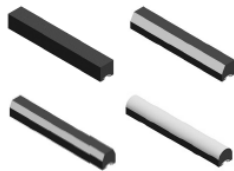


TEKNIKUM®  
Rubber Filling Segments

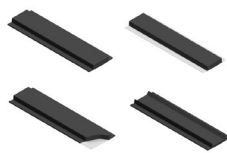


### Shell liners for overflow and grate discharge mills:

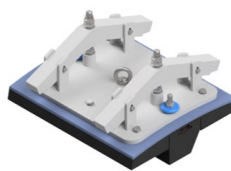
TEKNIKUM®  
Rubber Lifters



TEKNIKUM®  
Rubber Shell Plates



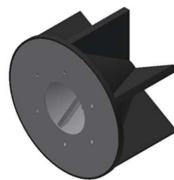
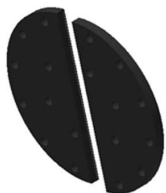
TEKNIKUM®  
Mill Man Door Liners



Mill liner Attachment  
Systems



### Rubber pulp lifter discharge systems for grate discharge mills:



TEKNIKUM®  
Rubber Filling Segments



Mill liner Attachment  
Systems

