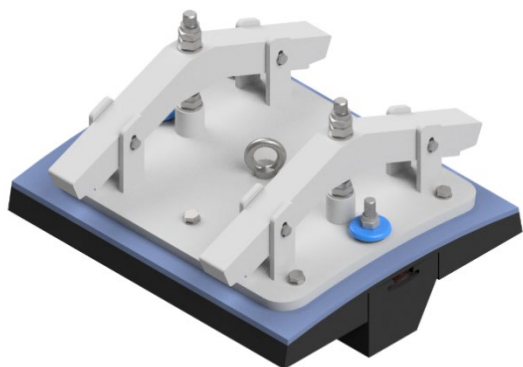


## TEKNIKUM® Mill Man Door Liners



Teknikum® Mill Man Door Liners are designed according to mill and manhole dimensions. Fixing components and gasket creates secure and sealed connection to mill shell and inner wear components.

Outside components frame plate and fixings are made from steel and painted according specifications. Inner wear components, lifter and wear plate with rubber and steel body, creates a combination, which is especially good in circumstances where man door lining must take sharp hits of grinded mineral and media.

All man door liners are moulded and tailor made for the customer mills and processes.

The quality rubber and thickness of wear plate and lifter will be chosen for every purpose differently. Rubber quality and thickness must be chosen according to grinding and process parameter.

### ADVANTAGES

---

- Excellent wear resistance
- Easy installation
- Light weight
- Secure and sealed connection to mill

### TECHNICAL PROPERTIES

---

#### Rubber compound

The wear components are made of wear resistant Teknikum® rubber compounds depending on the application.

#### Steel components

Steel components are made from steel and can be painted by customer specifications.

#### Man Door Liner outside components:

- **Man Door Fixing plate** for fixing the door to mill and wear plate to assembly.
- **Man Door Fixing dogs** for securing for fixing the door to mill
- **Man Door Fixings Systems** for wear plate fixing to fixing plate and for fixing dogs and lifter attachment systems.

#### Man Door Liner inner wear components:

- **Man Door Gasket** for securing leak proof connection between mill and man door liner
- **Man Door Wear Plate** steel backed plate with vulcanized rubber on wearing surface
- **Shell Plates Around Man Door** cut to shape shell plates around man door

Teknikum® Man Door liners are available for various sizes of overflow and grate discharge mills. The design of the man door can be with fixing dog type or with fixed outer plate type.

### MANUFACTURER

---

Teknikum Oy (Business ID FI07645274),  
Nokiankatu 1, 38210, Sastamala, Finland

#### Sales

Teknikum Group, Lining BU

## More information

[sales@teknikum.com](mailto:sales@teknikum.com)

[www.teknikum.com](http://www.teknikum.com)

All rights reserved. © 2020 Teknikum Group Ltd.

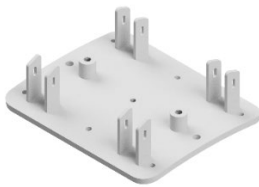


## ORDER REFERENCE

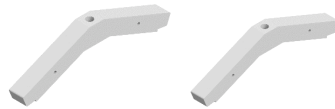
Other dimensions available on request.

Door widths	Door lengths	Fixing plate thickness	Wear plate thickness	Gasket thickness	For lifters widths
mm	mm	mm	mm	mm	mm
400-700	600-1500	20-30	40 - 100	10-15	100, 125, 140, 150, 165, 200, 210

## REFERENCE IMAGES



Fixing plate



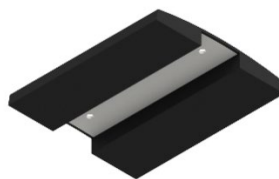
Fixing dogs



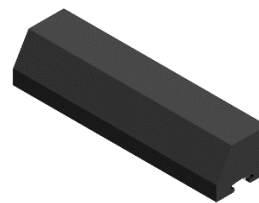
Man door fixings



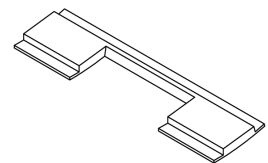
Man door gasket plates around man door



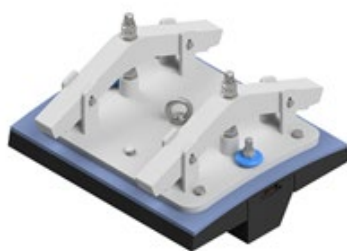
Man door wear plate



Man door lifter



Shell



Man door Lining assembly