

## Teknikum® 45° HOSE BENDS



### APPLICATIONS

Teknikum 45° hose bends are used in tight spaces where basic material handling hoses cannot bend enough. The hose bends are designed for hydraulic transportation of abrasive materials and suitable for many circumstances where the hose must resist wear, movements, vibrations and heat expansions.

Available in a wide range of customized dimensions and for extremely abrasive solutions with CERAMIC inner lining.

Two profile versions available:

#### Teknikum® 45° HOSE BEND

Size dependent ratio of bending radius & inner diameter

#### Teknikum® TITAN™ 45° HOSE BEND

3D bend

### ADVANTAGES

- Safe and durable material handling
- Excellent resistance to abrasion and weather (The outer curve of the hose bend is made +50% of wear resistant inner rubber)
- Eliminates vibrations and noise
- ESD protection
- Quick and easy installation

### TECHNICAL PROPERTIES

#### Structure

- Tube: black NR 43 ShA
  - smooth and wear resistant
  - antistatic
- Reinforcement:
  - HOSE BEND: textile and steel spiral from Ø i.d 150 mm
  - **TITAN™** HOSE BEND: textile and steel spiral
- Cover: black SBR 60 ShA
  - wear and weather resistant
  - antistatic
- Burst safety factor 2 x working press.

#### Temperature range

- -40°C - +80°C.

#### Electrical properties

- Conductive cover  $R \leq 10^6 \Omega / \text{length}$
- Conductive through the hose wall  $R \leq 10^9 \Omega$

### SUITABLE COUPLINGS AND FLANGES

Availability below and see connecting versions details in:

#### Teknikum® 45° HOSE BEND

- **Teknikum® Flange** datasheet
- **Teknikum® PLUS™ flange** datasheet

#### Teknikum® TITAN™ 45° HOSE BEND

- **Teknikum® PLUS™ flange** datasheet
- **Teknikum® TITAN™ Select** datasheet

Optionally we recommend Teknikum PLUS™ flange system for best performance.

#### 3D-model library for connecting hoses

[www.teknikum.com/3D](http://www.teknikum.com/3D)

## MANUFACTURER

Teknikum Oy (Business ID FI07645274),  
Nokiankatu 1, 38210, Sastamala, Finland

### More information

sales@teknikum.com  
www.teknikum.com

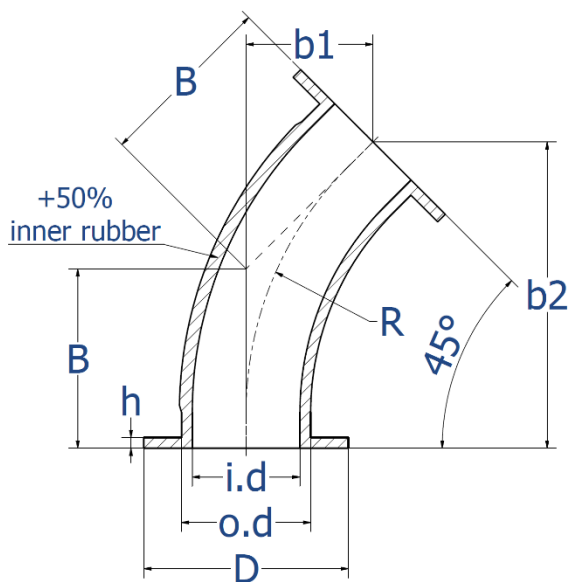


SCIENCE  
BASED  
TARGETS

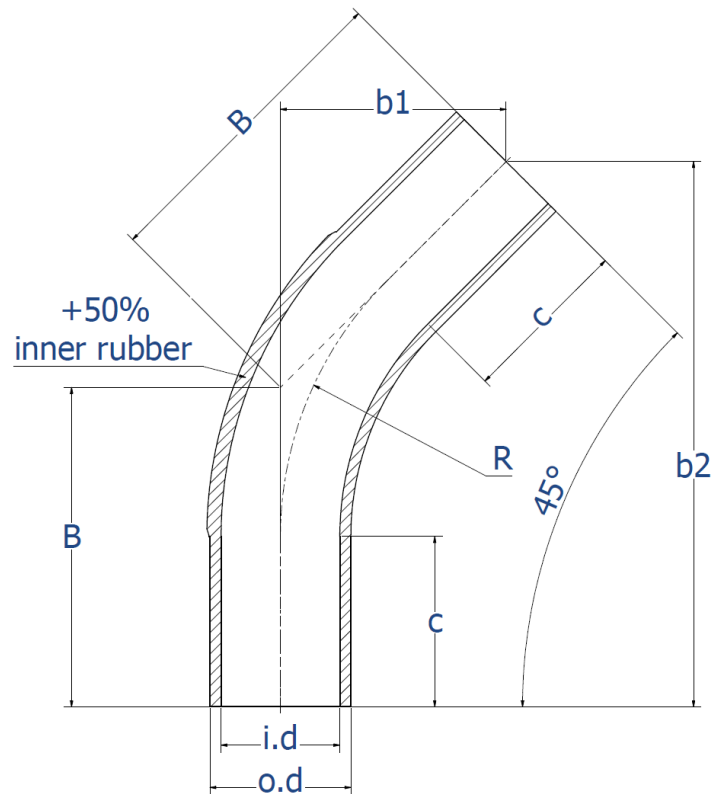
DRIVING AMBITIOUS CORPORATE CLIMATE ACTION

## ORDER REFERENCE & DIMENSIONS

### Teknikum® 45° HOSE BEND



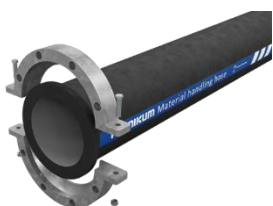
### Teknikum® TITAN™ 45° HOSE BEND



## AVAILABLE CONNECTION TYPE REFERENCE IMAGES

### Teknikum® 45° HOSE BEND

Teknikum® PLUS™ flange system



Teknikum® Support Flange

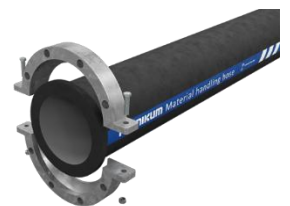


### Teknikum® TITAN™ 45° HOSE BEND






Teknikum® TITAN™ Select coupling



Teknikum® PLUS™ flange system



## Teknikum® TITAN™ 45° HOSE BEND

Product code 	Ø i.d mm 	Ø o.d mm 	c standard (min-max*) mm	R mm	b1 x b2 mm	B standard mm	Working press. bar 	Weight kg/pc 
HLFR10051T	51	72	105	155	120 x 290	170	10	1,3
HLFR10076T	76	100	105	230	140 x 340	200	10	2,0
HLFR10102T	102	125	150	305	195 x 475	275	10	4,0
HLFR10127T	127	154	190	380	245 x 595	348	10	5,4
HLFR10152T	152	178	215	455	285 x 690	405	10	11,5
HLFR06204T	204	238	275	615	375 x 905	530	10	15,5
HLFR06254T	254	291	215	765	375 x 905	530	10	22,5
HLFR06305T	305	341	255	915	445 x 1085	630	10	31,0
HLFR06350T**	350	403	295	724	520 x 1255	735	6	36,5
HLFR06405T**	400	456	400	600	650 x 1540	920	6	40,5
HLFR06450T**	450	508	500	1371	755 x 1825	1068	6	55,0
HLFR06508T	508	558	500	1520	800 x 1930	1132	6	68
HLFR06610T**	600	664	605	800	965 x 2352	1365	6	158






\*Customization only for with **PLUS™ flange** system

\*\*Ask for more information, also other dimensions available on request

### Order reference for different available connection type and Ceramic version

Product code	Item Name	Connection
HLFR10152T	<b>Teknikum TITAN</b> hose bend 45 SD 152 mm Select	TITAN Select coupling system, no included couplings
HLFR10152TF	<b>Teknikum TITAN</b> hose bend 45 SD 152 mm Select	TITAN Select coupling system, couplings included
HLFR10152P	<b>Teknikum TITAN</b> hose bend 45 SD 152 mm PLUS	PLUS flange system, no included flanges
HLFR10152PF	<b>Teknikum TITAN</b> hose bend 45 SD 152 mm PLUS	PLUS flange system, flanges included
HLFC10152T	<b>Teknikum TITAN CERAMIC</b> hose bend 45 SD 152 mm Select	TITAN Select coupling system, no included couplings
HLFC10152TF	<b>Teknikum TITAN CERAMIC</b> hose bend 45 SD 152 mm Select	TITAN Select coupling system, couplings included
HLFC10152P	<b>Teknikum TITAN CERAMIC</b> hose bend 45 SD 152 mm PLUS	PLUS flange system, no included flanges
HLFC10152PF	<b>Teknikum TITAN CERAMIC</b> hose bend 45 SD 152 mm PLUS	PLUS flange system, flanges included

## Teknikum® 45° HOSE BEND

Product code	Ø i.d mm	Ø o.d mm	Ø D mm	h mm	R mm	c mm	b1 x b2 mm	B standard mm	Working press. bar	Weight kg/pc
										
HLFR10050	50	72	165	10	290	30	106 x 256	150	10	1,2
HLFR10063	63	85	188	10	310	38	117 x 282	165	10	1,5
HLFR10075	75	97	198	12	340	35	124 x 300	175	10	1,8
HLFR10100	100	130	220	13	374	45	141 x 341	200	10	3,2
HLFR10125	125	155	250	16	422	50	159 x 384	225	10	4,5
HLFR10150	150	180	285	15	483	50	177 x 427	250	10	5,9
HLFR06200	200	236	340	16	591	55	212 x 512	300	6	9,9
HLFR06250	250	284	395	16	700	60	247 x 597	350	6	13,2
HLFR06300	300	336	445	16	809	70	286 x 683	405	6	20,0
HLFR06350	350	390	505	16	724	150	318 x 768	450	6	24,0
HLFR06400	400	440	565	16	600	250	353 x 851	500	6	32,0
HLFR06500	500	540	670	16	700	110	283 x 683	400	6	40,0
HLFR06600	600	640	780	16	800	120	319 x 771	452	6	42,0

### Order reference for different available connection type and Ceramic version

Product code	Item name	Connection
HLFR10150	<b>Teknikum</b> hose bend 45 SD 150 mm	hose without support flanges/drillings
HLFR10150F	<b>Teknikum</b> hose bend 45 SD 150 mm	hose with support flanges/drillings
HLFR10150P	<b>Teknikum</b> hose bend 45 SD 150 mm PLUS	PLUS flange system, no included flanges
HLFR10150PF	<b>Teknikum</b> hose bend 45 SD 150 mm PLUS	PLUS flange system, flanges included
HLFC10150P	<b>Teknikum CERAMIC</b> hose bend 45 SD 150 mm PLUS	PLUS flange system, no included flanges
HLFC10150PF	<b>Teknikum CERAMIC</b> hose bend 45 SD 150 mm PLUS	PLUS flange system, flanges included