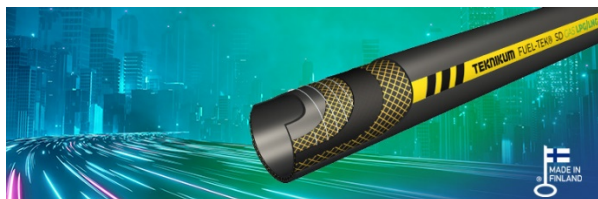


## Teknikum FUEL-TEK® SD GAS LPG/LNG



### APPLICATIONS

Teknikum FUEL-TEK® GAS LPG/LNG suction and delivery hose is designed for liquid gas applications such as applications of transferring LPG (Liquefied Petroleum Gas) and natural gas.

The hose can be used for many suitable applications e.g. as loading and unloading containers, trucks, tankers in industrial plants, harbors, docks and terminals.

The hose is designed accordingly to EN 1762:2003 type SD. Consequently, the working pressure is 2,5 MPa and the hose tube is resistant to most common saturated hydrocarbons as methane, ethane, propane, butane in its gaseous or liquid form.

The hose cover is pin pricked allowing smooth gas permeation for safety reasons.

### ADVANTAGES

- Safe and durable hose
- Multipurpose
- Excellent weather and ageing resistance
- High mechanical strength

### STANDARD/ COMPLIANCY

Meets the requirements of standard EN 1762:2003 for Ω-type hose, meaning that resistance of the hose is  $< 10^6 \Omega$  per length.

### TECHNICAL PROPERTIES

#### Previous versions

Teknikum ALKA-TEK™  
(same reference and structure)

#### Structure

- Tube:
  - black NBR1
  - smooth
  - resistant to most common alkanes
  - diffusion resistant
  - antistatic
- Reinforcement: textile and steel spiral
- Cover:
  - black CR
  - antistatic
  - pin pricked
  - non-flammable
  - wear and weather resistant
- Safety factor: 4 (Burst pressure = 4,0 x Working pressure)

#### Temperature range

-40°C... +100°C.

#### Electrical properties

The resistance of the hose is  $< 10^6 \Omega$  per length.

### SUITABLE COUPLINGS AND CLAMPS

We recommend hose couplings according to EN 14420-7 and clamps according to EN 14420-3.

### MANUFACTURER

Teknikum Oy (Business ID FI07645274),  
Nokiankatu 1, 38210, Sastamala, Finland

## More information

sales@teknikum.com

[www.teknikum.com](http://www.teknikum.com)

All rights reserved. © 2020 Teknikum Group Ltd.



## ORDER REFERENCE

Product code	Ø i.d. mm	Ø o.d. mm	Working press. MPa	Vacuum max. MPa	Bending radius mm	Weight kg/m	Length m
<b>3462BC019</b>	19	31	2,5	0,09	75	0,70	40
<b>3462BC025</b>	25	38	2,5	0,09	90	0,90	40
<b>3462BC032</b>	32	45	2,5	0,09	110	1,00	40
<b>3462BC038</b>	38	52	2,5	0,09	120	1,30	40
<b>3462BC050</b>	50	66	2,5	0,09	200	2,00	40
<b>3462BC063</b>	63	81	2,5	0,09	230	1,80	40
<b>3462BC075</b>	75	93	2,5	0,09	260	2,00	40
<b>3462BC100</b>	100	120	2,5	0,09	450	4,10	40

Other dimensions available on request.

## MARKINGS

