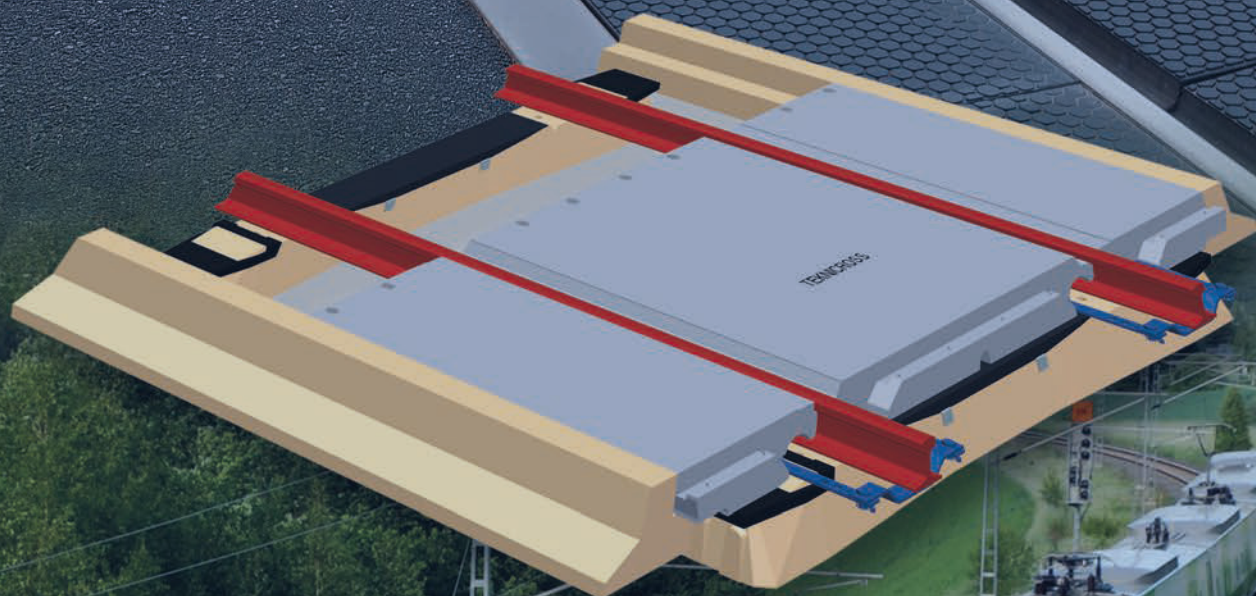


TEKNIKUM

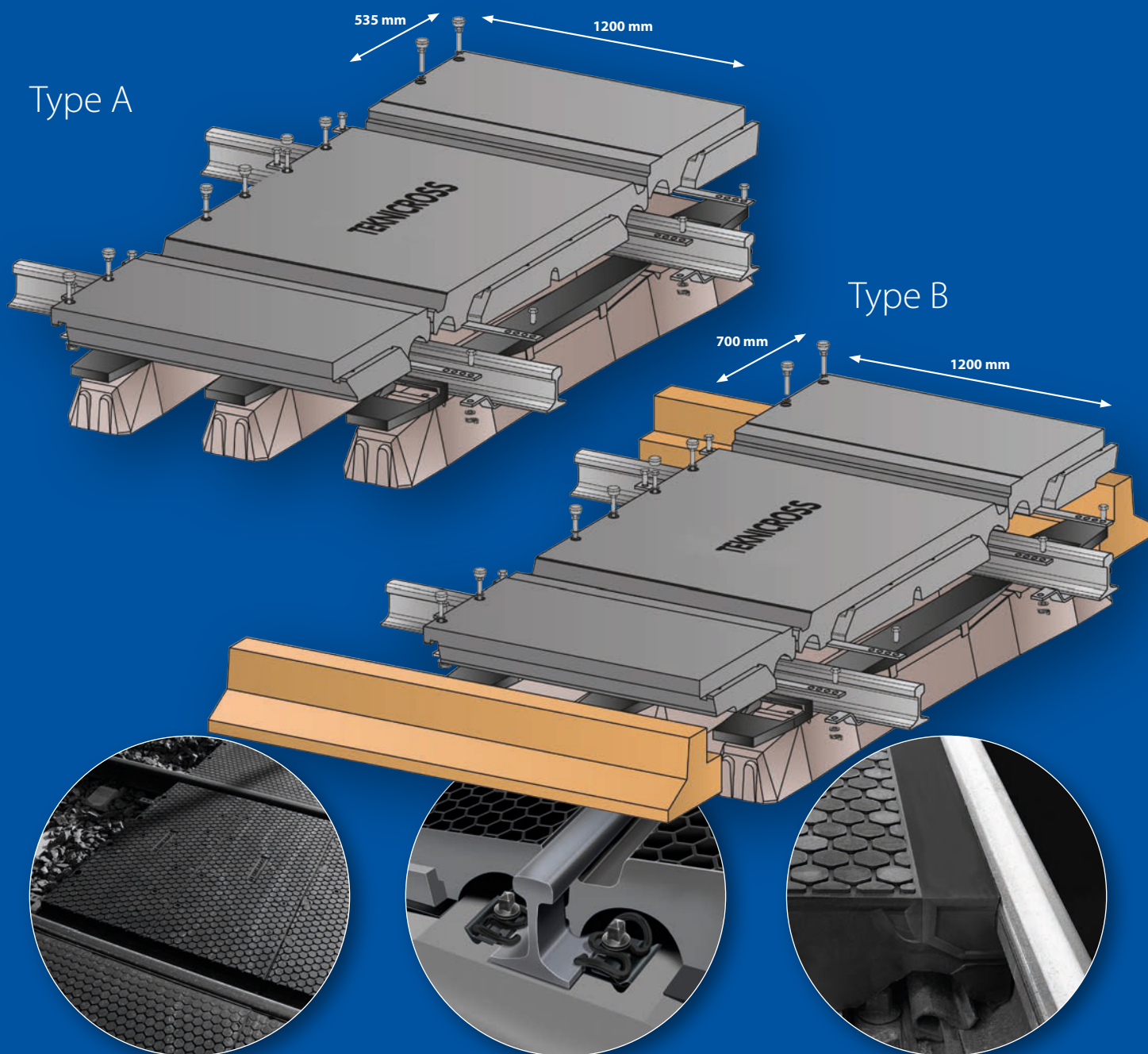
Teknicross™

Rubber level crossings



Level crossing for demanding conditions

Teknikum manufactures high-quality rubber level crossings for most common rail gauges, rail types, and fastening systems. There are two level crossing versions available, types A and B; they differ in the width of the outer elements. The level crossing consists of inner and outer elements, both equipped with a male/female tongue and groove, and fitting plates to be installed on top of the sleeper.



Surface of the element is made of special wear resistant rubber. The flexible rubber surface, especially designed for Nordic conditions, ensures silent use and is easy to maintain. Teknikum has delivered around 300 level crossing projects in the Nordic countries, Russia and Central Europe.

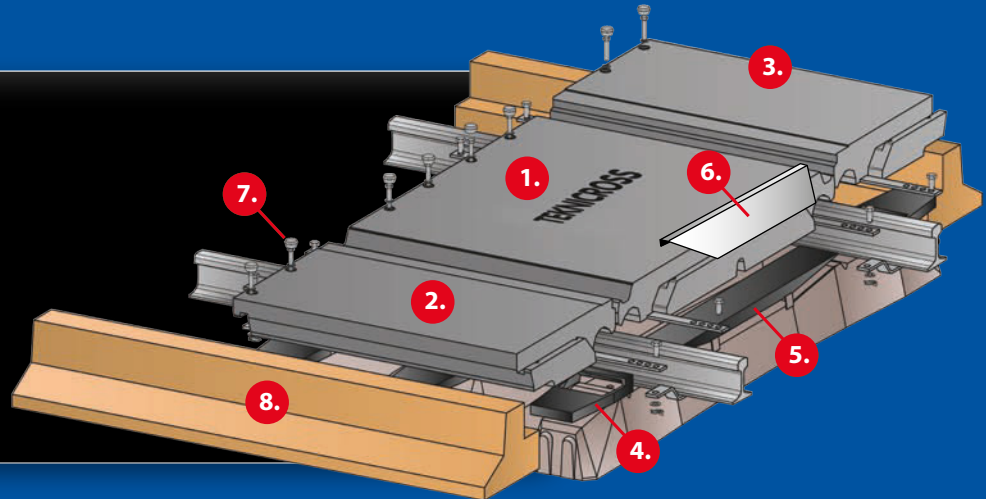
The rubber element is supported on the rail and it has places for the fastening components. The flange groove meets local norms.

Rubber level crossings can also be manufactured without flange grooves. These are particularly suited to railway yards and level crossings which feature pedestrian and cycle paths, where the absence of the flange groove ensures safer crossing by foot and bicycle.

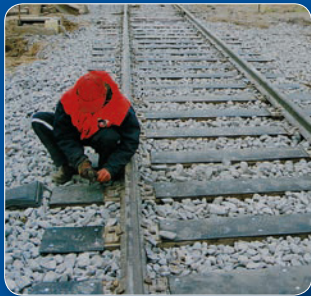
Quick and easy installation system

The fastening system developed by Teknikum is designed to facilitate and expedite the installation and, if necessary, later removal of the level crossing. No special tools are required.

- 1. Inner element, female/male
- 2. Outer element, female/male
- 3. Outer element, female/male
- 4. Outer fitting plate
- 5. Inner fitting plate
- 6. Deflector plate (optional)
- 7. Fastening screw and protection plug
- 8. Transfer bar (not included)



Installing the level crossing



1. Preparing the foundation

The fitting plates are placed on top of the sleepers, and the ballast is rammed and levelled until it is flush with the top of the fitting plates surface. If necessary, an anchorage iron is delivered.



2. Installation of the inner elements

The installation begins at the end of the level crossing. The bendable inner elements are quick to install, and no special tools are needed. Installation can be carried out either manually or as machine installation.



3. Installing and supporting the outer elements

Installation is carried out in the same way as for the inner element, on top of the rammed foundation and fitting plates/transfer bar. The asphalt is spread tight after the installation.



4. The deflector plates (optional) are installed in the both ends of the crossing

Teknikum is one of Europe's leading manufacturers of rubber level crossings.



Teknicross™ Level crossing

	Dimensions (length x width x height)	Weight
Rail gauge 1000 mm		
Inner element	600 x 1050 x 150 mm	~ 90 kg
Outer element	1200 x 535 x 150 mm	~ 110 kg
Rail gauge 1435 mm		
Inner element	1200 x 1500 x 150 mm	~ 315 kg
	1200 x 1500 x 170 mm	~ 355 kg
	(600) x 1500 x 150 mm *)	~ 155 kg
	(600) x 1500 x 170 mm *)	~ 175 kg
Outer element	1200 x 535 x 150 mm	~ 120 kg
	1200 x 535 x 170 mm	~ 130 kg
	1200 x 700 x 150 mm	~ 150 kg
	1200 x 700 x 170 mm	~ 165 kg
Rail gauge 1524 mm		
Inner element	1200 x 1585 x 150 mm	~ 320 kg
	1200 x 1580 x 150 mm	~ 360 kg
	(600) x 1585 x 170 mm *)	~ 180 kg
Outer element	1200 x 535 x 150 mm	~ 120 kg
	1200 x 535 x 170 mm	~ 130 kg
	1200 x 700 x 150 mm	~ 150 kg
	1200 x 700 x 170 mm	~ 165 kg

*) Can also be supplied 600 mm wide

This publication is meant to provide general information, and Teknikum reserves the right to change the product design and product specifications at any time. The information in this publication shall not be regarded as any kind of guarantee or condition concerning a product, its suitability for a particular purpose, its merchantability, the nature of the purchase contract, or any related elements. The marks denoted by CETM, are registered trademarks of Teknikum Oy. Copyright Teknikum Oy.

The level crossing is suitable for the following tracks, for example:

Rail types

- 54E1
- 60E1
- SBBI
- SBBIV
- S49
- S54
- other types by special order

Sleeper type

- Wooden sleepers
- Concrete sleepers

Fastening

- Common fastening systems

Rail gauge

- 1000 mm
- 1435 mm
- 1524 mm

Teknikum is a leading Nordic supplier in the polymer technology field whose solutions help customers around the world. The company was established in 1989. Teknikum Group in Finland consists of Teknikum Oy's factories at Vammala and Kiikka and Teknikum Sekoitukset Oy at Kerava. The rail traffic products have been developed in collaboration with experts in the field.

- Mould and plastic products
- Industrial hoses
- Polyurethane products
- Vibration dampening mats
- Wear elements
- Rubber linings
- Rollers
- Mill linings



Vammala factory



Kiikka factory