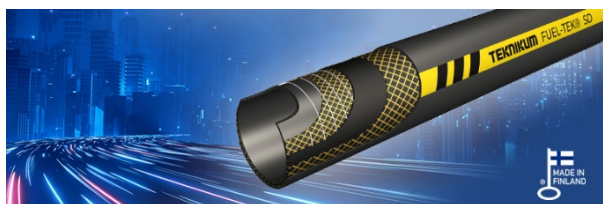


Teknikum FUEL-TEK® SD



APPLICATIONS

Suction and Delivery oil hose for transportation of almost all oil-based materials and hydrocarbons with maximum aromatic content of 50%. The hose is suitable for gasoline, diesel oil and oil mixed water.

The hose can be used also with biodiesels which have less than 20% fame and with bioethanol containing biofuels.

Meets the requirements of chemical hose standard EN 12115:2011, EN1761:1999 and German standard TRbF 131/2 for Ω -type hoses.

ADVANTAGES

- Suitable for almost all petroleum-based products
- Excellent weather and ageing resistance
- High mechanical strength
- High burst pressure ≥ 64 bar
- Suitable with many types of couplings

TECHNICAL PROPERTIES

Previous versions

Teknikum FUEL-TEK® 2410 (same reference and structure)

Structure

- Tube:
 - oil and fuel resistant
 - black NBR 1
 - smooth
- Reinforcement: textile and steel spiral
- Cover:
 - black CR
 - wear and weather resistant
 - smooth
 - non-flammable
- Safety factor: 4

Temperature range

- 30°C... +100°C.

Electrical properties

- Meets the requirements of EN 12115:2011
- Hose type: Ω /T
- Conductive tube and cover $R \leq 10^6 \Omega$ / length
- Conductive through the hose wall $R \leq 10^9 \Omega$
- ATEX compliance (EC 2014/34/EU), equipment group II / category 2.

SUITABLE COUPLINGS AND CLAMPS

We recommend hose couplings according to EN 14420-7 and clamps according to EN 14420-3.

MANUFACTURER

Teknikum Oy (Business ID FI07645274),
Nokiankatu 1, 38210, Sastamala, Finland

More information

sales@teknikum.com

www.teknikum.com

© All rights reserved by Teknikum Group
2020



ORDER REFERENCE

Product code	Ø i.d. mm	Ø o.d. mm	Working press. MPa	Vacuum max. MPa	Bending radius mm	Weight kg/m	Length m
2410BC016	16	27	1,0	0,09	64	0,60	40
2410BC019	19	31	1,0	0,09	76	0,70	40
2410BC022	22	33	1,0	0,09	88	0,70	40
2410BC025	25	37	1,6	0,09	100	0,90	40
2410BC030	30	40	1,0	0,09	120	0,90	40
2410BC032	32	44	1,0	0,09	128	1,00	40
2410BC038	38	51	1,6	0,09	152	1,30	40
2410BC040	40	53	1,0	0,09	160	1,20	40
2410BC045	45	59	1,0	0,09	180	1,40	40
2410BC050	50	62	1,0	0,09	200	1,60	40
2410BC050-8	50	66	1,6	0,09	200	2,00	40
2410BC057	57	70	1,0	0,09	228	1,60	40
2410BC063	63	79	1,0	0,09	252	1,80	40
2410BC075	75	91	1,6	0,09	300	2,00	40
2410BC076	76	92	1,0	0,09	304	2,20	40
2410BC090	90	106	1,0	0,09	360	3,20	40
2410BC100	100	116	1,6	0,09	400	4,10	40
2410BC102	102	118	1,0	0,09	408	4,00	40
2410BC115	115	135	1,0	0,09	460	4,20	40
2410BC127	127	147	0,6	0,09	508	4,60	20
2410BC152	152	172	0,6	0,09	608	7,80	20

Other dimensions available on request.

MARKINGS



The marking tape also include standard markings:

TEKNIKUM - EN 12115:2011 - SD - (id) - 16bar - -35°C/+100°C - Ω/T - quarter/year