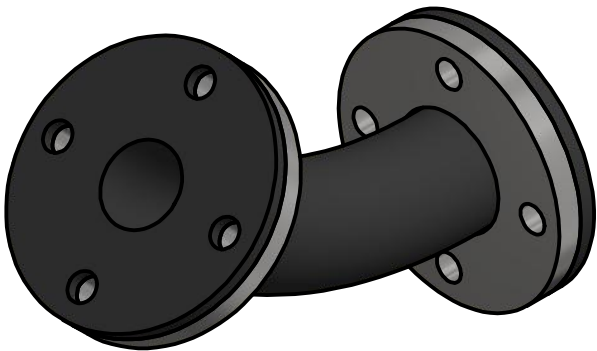
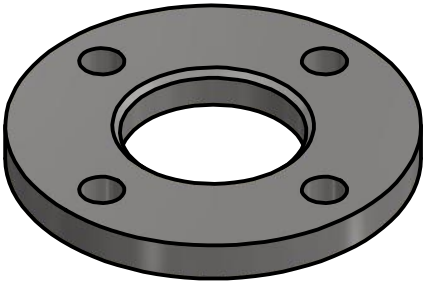
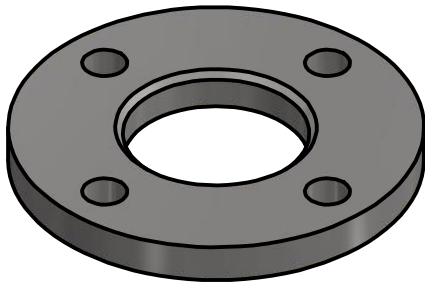


Connecting hoses

LFR - 45° hose for pressure



Item 1: Rubber hose.
Standard product code: LFR...



Item 2: Steel support flanges.
Standard product code: LAIPNS...

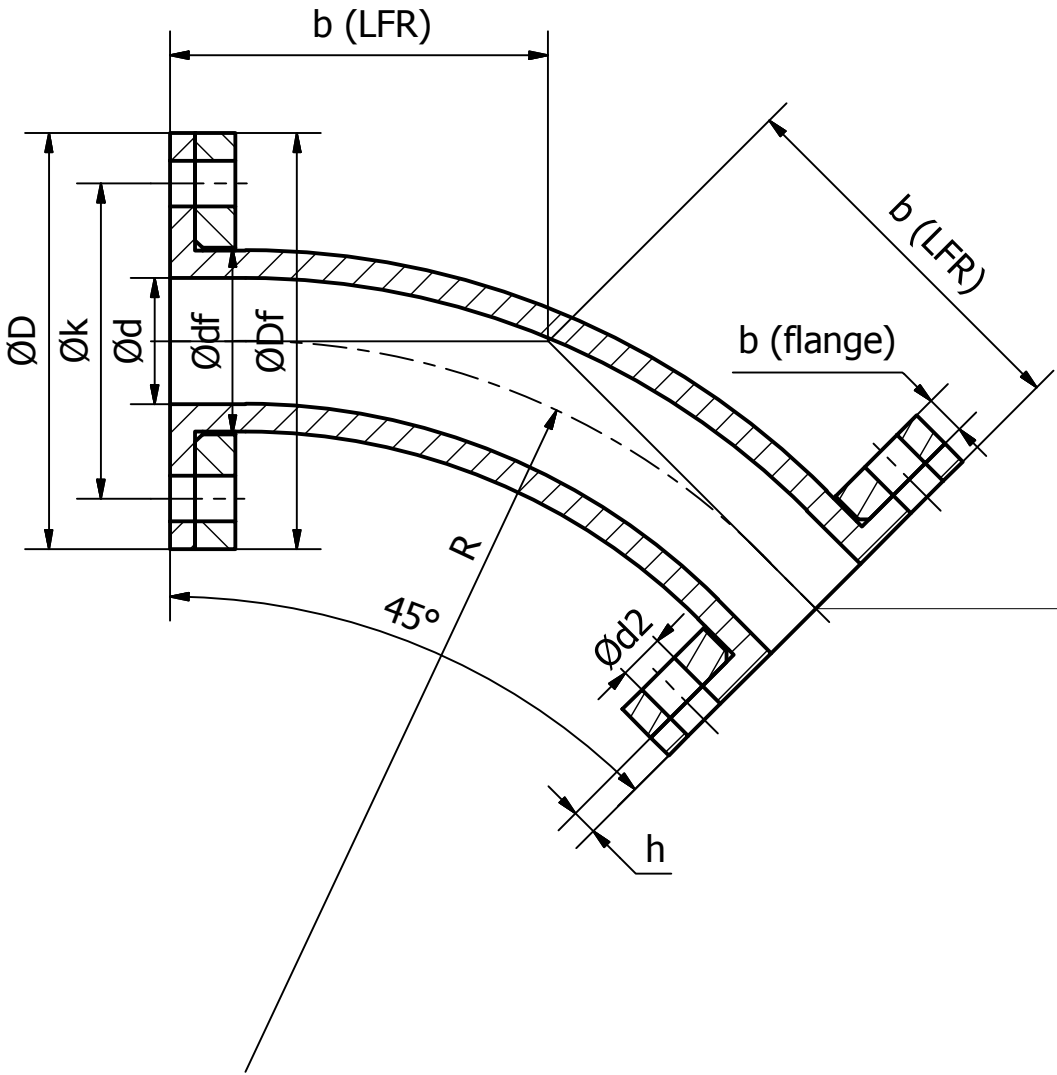
- includes rubber flange drillings to the rubber hose
- includes assembly of steel flanges on rubber hose



Complete product

| EXAMPLE PART LIST | | | | |
|-------------------|-----|-------------|-------------|--------------|
| ITEM | QTY | PART NUMBER | MATERIAL | MANUFACTURER |
| 1 | 1 | LFR10050 | NR, BLACK | TEKNIKUM OY |
| 2 | 2 | LAIPNS050 | S235JRG2/Zn | TEKNIKUM OY |

| | | | |
|---|--|----------------------------|-------------------|
| This drawing is property of TEKNIKUM and must not be utilized, copied, hectographed or its data must not be surrendered to a third party without TEKNIKUM's consent in advance. | | Designed by V. Korppila | Date 13.9.2017 |
| TEKNIKUM OY FI-38210 SASTAMALA FINLAND PHONE +358 35 1911 FAX +358 35 143137 | | LFR - General description | |
| LFR | | Edition v1.0 | Sheet 1 / 2 |



- Available customization on request.
(standard product code not valid anymore)
- Rubber material, e.g. NR, SBR, SBRT, NBR, EPDM, CSM, FKM available, as well as e.g. UHMWPE, ceramic and steel.
 - Increased working pressure or vacuum resistance.
 - Connection dimensions, e.g. ANSI rubber flanges and steel support flanges.
 - Teknikum Plus flange connection system instead of rubber flanges.
 - ALL customization will lead to a new product code.
- In case of customization refrain from using standard product code.
More product information: <http://www.teknikum.com>

| Standard product code | Standard Ød mm | Standard Ødu mm | Standard ØD mm | Standard h mm | Standard R mm | Standard b mm | Standard working press. MPa | Standard weight kg/pc |
|-----------------------|----------------|-----------------|----------------|---------------|---------------|---------------|-----------------------------|-----------------------|
| LFR10050 | 50 | 72 | 165 | 10 | 290 | 150 | 1,0 | 1,20 |
| LFR10063 | 63 | 85 | 188 | 10 | 310 | 165 | 1,0 | 1,50 |
| LFR10075 | 75 | 97 | 198 | 12 | 340 | 175 | 1,0 | 1,80 |
| LFR10100 | 100 | 130 | 220 | 13 | 374 | 200 | 1,0 | 3,20 |
| LFR10125 | 125 | 155 | 250 | 16 | 422 | 225 | 1,0 | 4,50 |
| LFR10150 | 150 | 180 | 285 | 15 | 483 | 250 | 1,0 | 5,90 |
| LFR06200 | 200 | 236 | 340 | 16 | 591 | 300 | 0,6 | 9,90 |
| LFR06250 | 250 | 284 | 395 | 16 | 700 | 350 | 0,6 | 13,20 |
| LFR06300 | 300 | 336 | 445 | 16 | 809 | 400 | 0,6 | 20,00 |
| LFR06305 | 305 | 336 | 445 | 16 | 915 | 379 | 0,6 | 22,50 |
| LFR06350 | 350 | 390 | 505 | 16 | 724 | 450 | 0,6 | 24,00 |
| LFR06400 | 400 | 440 | 565 | 16 | 600 | 500 | 0,6 | 32,00 |
| LFR06500 | 500 | 540 | 670 | 16 | 700 | 400 | 0,6 | 40,00 |
| LFR06600 | 600 | 640 | 780 | 16 | 800 | 450 | 0,6 | 42,00 |

| Standard product code | Pressure class / Nominal diameter | Outer diameter ØDf mm | Hole circle Øk mm | Hole Ød2 mm | Thickness b mm | Holes pcs | Screw thread | Inner diameter Ødf | Weight kg/pc |
|-----------------------|-----------------------------------|-----------------------|-------------------|-------------|----------------|-----------|--------------|--------------------|--------------|
| LAIPNS020 | PN10/16 / DN 20 | 105 | 75 | 14 | 14 | 4 | M12 | 36 | 0,80 |
| LAIPNS025 | PN10/16 / DN 25 | 115 | 85 | 14 | 16 | 4 | M12 | 42 | 1,05 |
| LAIPNS032 | PN10/16 / DN 32 | 140 | 100 | 18 | 16 | 4 | M16 | 52 | 1,60 |
| LAIPNS040 | PN10/16 / DN 40 | 150 | 110 | 18 | 16 | 4 | M16 | 64 | 1,80 |
| LAIPNS050 | PN10/16 / DN 50 | 165 | 125 | 18 | 16 | 4 | M16 | 74 | 2,10 |
| LAIPNS065 | PN10/16 / DN 65 | 185 | 145 | 18 | 16 | 4 | M16 | 92 | 2,40 |
| LAIPNS080 | PN10/16 / DN 80 | 200 | 160 | 18 | 18 | 8 | M16 | 108 | 2,90 |
| LAIPNS100 | PN10/16 / DN 100 | 220 | 180 | 18 | 18 | 8 | M16 | 135 | 3,20 |
| LAIPNS125 | PN10/16 / DN 125 | 250 | 210 | 18 | 18 | 8 | M16 | 158 | 4,00 |
| LAIPNS150 | PN10/16 / DN 150 | 285 | 240 | 22 | 18 | 8 | M20 | 188 | 4,70 |
| LAIPNS200 | PN10 / DN 200 | 340 | 295 | 22 | 20 | 8 | M20 | 238 | 7,00 |
| LAIPNS250 | PN10 / DN 250 | 395 | 350 | 22 | 22 | 12 | M20 | 294 | 9,00 |
| LAIPNS300 | PN10 / DN 300 | 445 | 400 | 22 | 26 | 12 | M20 | 344 | 12,00 |
| LAIPNS350 | PN10 / DN 350 | 505 | 460 | 22 | 28 | 16 | M20 | 400 | 16,00 |
| LAIPNS400 | PN10 / DN 400 | 565 | 515 | 26 | 32 | 16 | M24 | 452 | 22,10 |
| LAIPNS450 | PN10 / DN 450 | 615 | 565 | 26 | 35 | 20 | M24 | 505 | 27,00 |
| LAIPNS500 | PN10 / DN 500 | 670 | 620 | 26 | 38 | 20 | M24 | 555 | 33,00 |
| LAIPNS600 | PN10 / DN 600 | 780 | 725 | 30 | 44 | 20 | M27 | 670 | 47,00 |
| LAIPNS700 | PN10 / DN 700 | 895 | 840 | 30 | 50 | 24 | M27 | 760 | 59,00 |
| LAIPNS800 | PN10 / DN 800 | 1015 | 950 | 33 | 56 | 24 | M30 | 870 | 78,00 |

| | | | |
|---|--|----------------------------|-------------------|
| This drawing is property of TEKNIKUM and must not be utilized, copied, hectographed or its data must not be surrendered to a third party without TEKNIKUM's consent in advance. | | Designed by V. Korppila | Date 13.9.2017 |
| TEKNIKUM OY FI-38210 SASTAMALA FINLAND PHONE +358 35 1911 FAX +358 35 143137 | | LFR - General description | |
| LFR | | Edition v1.0 | Sheet 2 / 2 |