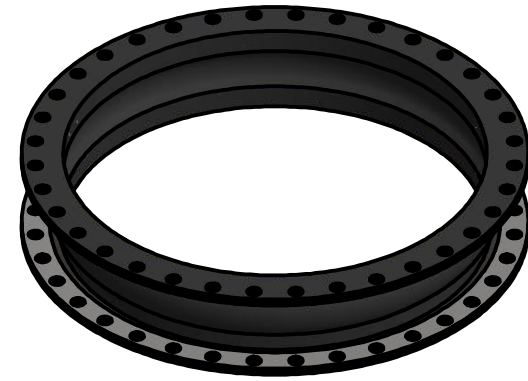
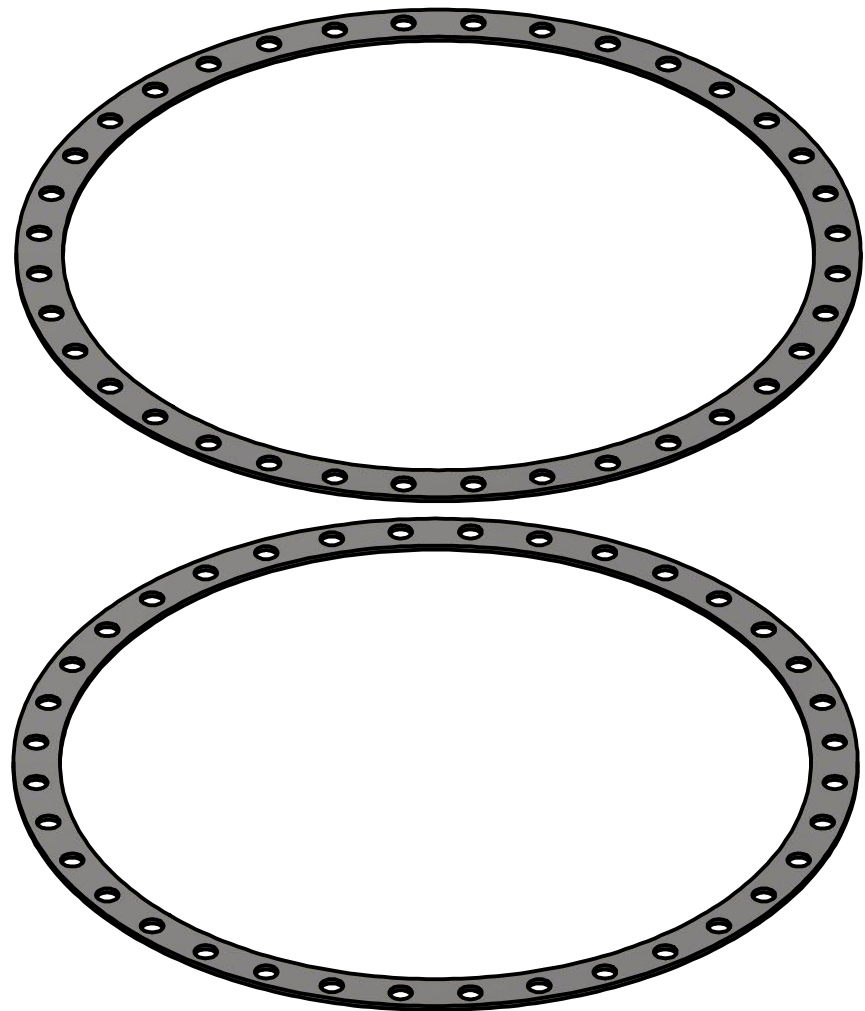


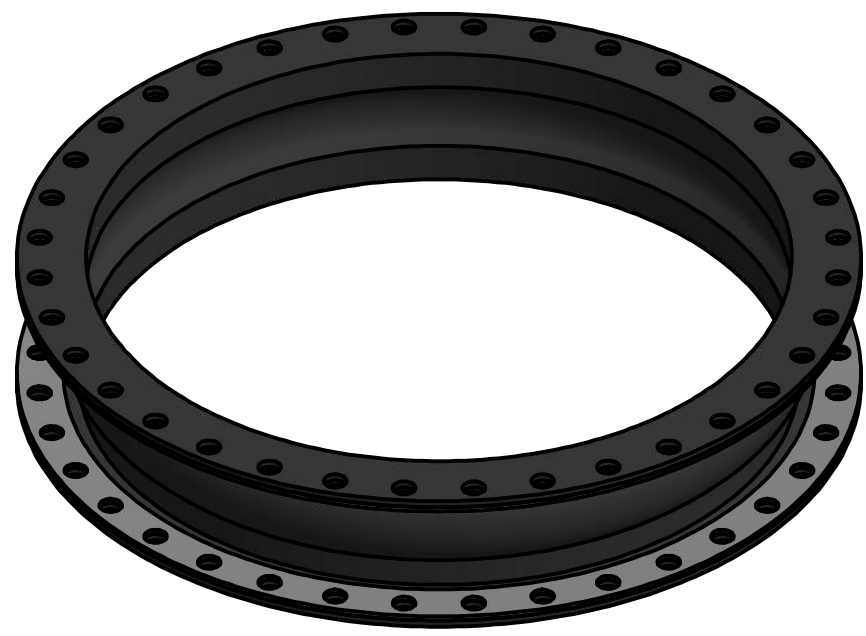
Connecting hoses
LCM - Large compensator hose
for pressure and vacuum



Item 1: Rubber hose.
Standard product code: LHR...



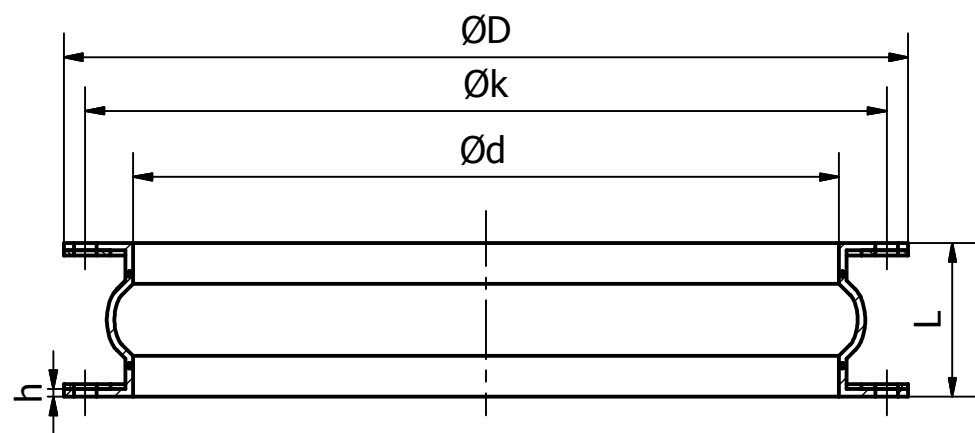
Item 2: Steel support flanges.
Standard product code: LAIPNS...
• includes rubber flange drillings to the rubber hose
• includes assembly of steel flanges on rubber hose



Complete product

EXAMPLE PART LIST				
ITEM	QTY	PART NUMBER	MATERIAL	MANUFACTURER
1	1	LCM061600	NR, BLACK	TEKNIKUM OY
2	2	LAIPNS1600	S235JRG2/Zn	TEKNIKUM OY

This drawing is property of TEKNIKUM and must not be utilized, copied, hectographed or its data must not be surrendered to a third party without TEKNIKUM's consent in advance.		Designed by V. Korppila	Date 13.9.2017
TEKNIKUM OY FI-38210 SASTAMALA FINLAND PHONE +358 35 1911 FAX +358 35 143137		LCM - General description	
LCM		Edition v1.0	Sheet 1 / 2



All LCM hoses are customized products, designed together with customer.

- Rubber material, e.g. NR, SBR, SBRT, NBR, EPDM, CSM, FKM available.
- Working pressure or vacuum resistance.
- Length (see minimum and maximum length in table).
- Connection dimensions, e.g. ANSI rubber flanges and steel support flanges.
- Teknikum Plus flange connection system instead of rubber flanges.

More product information: <http://www.teknikum.com>

Ød mm	ØD mm	h mm	Min. - max. L mm	Max. working pressure MPa	Max. Vacuum MPa	Max. axial flexibility mm	Lateral flexibility mm	Max. angular deviation	Approximate weight with min. length kg
600	780	16	300 - 1000	0,6	0,07	± 30	15	4,0°	45
700	892	16	300 - 1000	0,6	0,07	± 30	18	4,0°	65
800	1015	16	300 - 1000	0,6	0,07	± 30	21	4,0°	90
900	1117	22	300 - 1000	0,6	0,07	± 30	24	3,0°	120
1000	1222	16	300 - 1000	0,6	0,07	± 30	27	3,0°	130
1200	1455	20	300 - 1000	0,6	0,07	± 30	30	3,0°	150
1400	1675	15	300	0,6	0,07	± 30	33	2,0°	170
1600	1915	15	300	0,6	0,07	± 30	39	2,0°	200
1800	2113	25	300	0,6	0,07	± 30	45	1,5°	250

Standard product code	Pressure class / Nominal diameter	Outer diameter ØDf mm	Hole circle Øk mm	Hole Ød2 mm	Thickness b mm	Holes pcs	Screw thread	Inner diameter Ødf	Weight kg/pc
LAIPNS020	PN10/16 / DN 20	105	75	14	14	4	M12	36	0,80
LAIPNS025	PN10/16 / DN 25	115	85	14	16	4	M12	42	1,05
LAIPNS032	PN10/16 / DN 32	140	100	18	16	4	M16	52	1,60
LAIPNS040	PN10/16 / DN 40	150	110	18	16	4	M16	64	1,80
LAIPNS050	PN10/16 / DN 50	165	125	18	16	4	M16	74	2,10
LAIPNS065	PN10/16 / DN 65	185	145	18	16	4	M16	92	2,40
LAIPNS080	PN10/16 / DN 80	200	160	18	18	8	M16	108	2,90
LAIPNS100	PN10/16 / DN 100	220	180	18	18	8	M16	135	3,20
LAIPNS125	PN10/16 / DN 125	250	210	18	18	8	M16	158	4,00
LAIPNS150	PN10/16 / DN 150	285	240	22	18	8	M20	188	4,70
LAIPNS200	PN10 / DN 200	340	295	22	20	8	M20	238	7,00
LAIPNS250	PN10 / DN 250	395	350	22	22	12	M20	294	9,00
LAIPNS300	PN10 / DN 300	445	400	22	26	12	M20	344	12,00
LAIPNS350	PN10 / DN 350	505	460	22	28	16	M20	400	16,00
LAIPNS400	PN10 / DN 400	565	515	26	32	16	M24	452	22,10
LAIPNS450	PN10 / DN 450	615	565	26	35	20	M24	505	27,00
LAIPNS500	PN10 / DN 500	670	620	26	38	20	M24	555	33,00
LAIPNS600	PN10 / DN 600	780	725	30	44	20	M27	670	47,00
LAIPNS700	PN10 / DN 700	895	840	30	50	24	M27	760	59,00
LAIPNS800	PN10 / DN 800	1015	950	33	56	24	M30	870	78,00

This drawing is property of TEKNIKUM and must not be utilized, copied, hectographed or its data must not be surrendered to a third party without TEKNIKUM's consent in advance.		Designed by V. Korppila	Date 13.9.2017
TEKNIKUM OY FI-38210 SASTAMALA FINLAND PHONE +358 35 1911 FAX +358 35 143137	LCM - General description		
	LCM	Edition v1.0	Sheet 2 / 2